

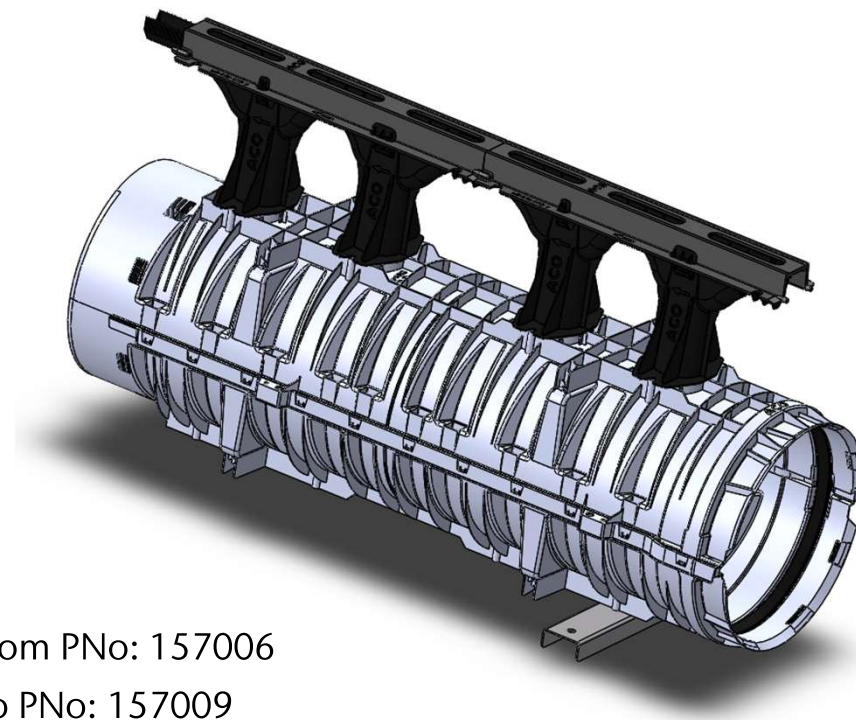


ACO. creating

the future of drainage

Assembly Qmax Neo 300 - (157009)





How to assemble

From PNo: 157006

To PNo: 157009

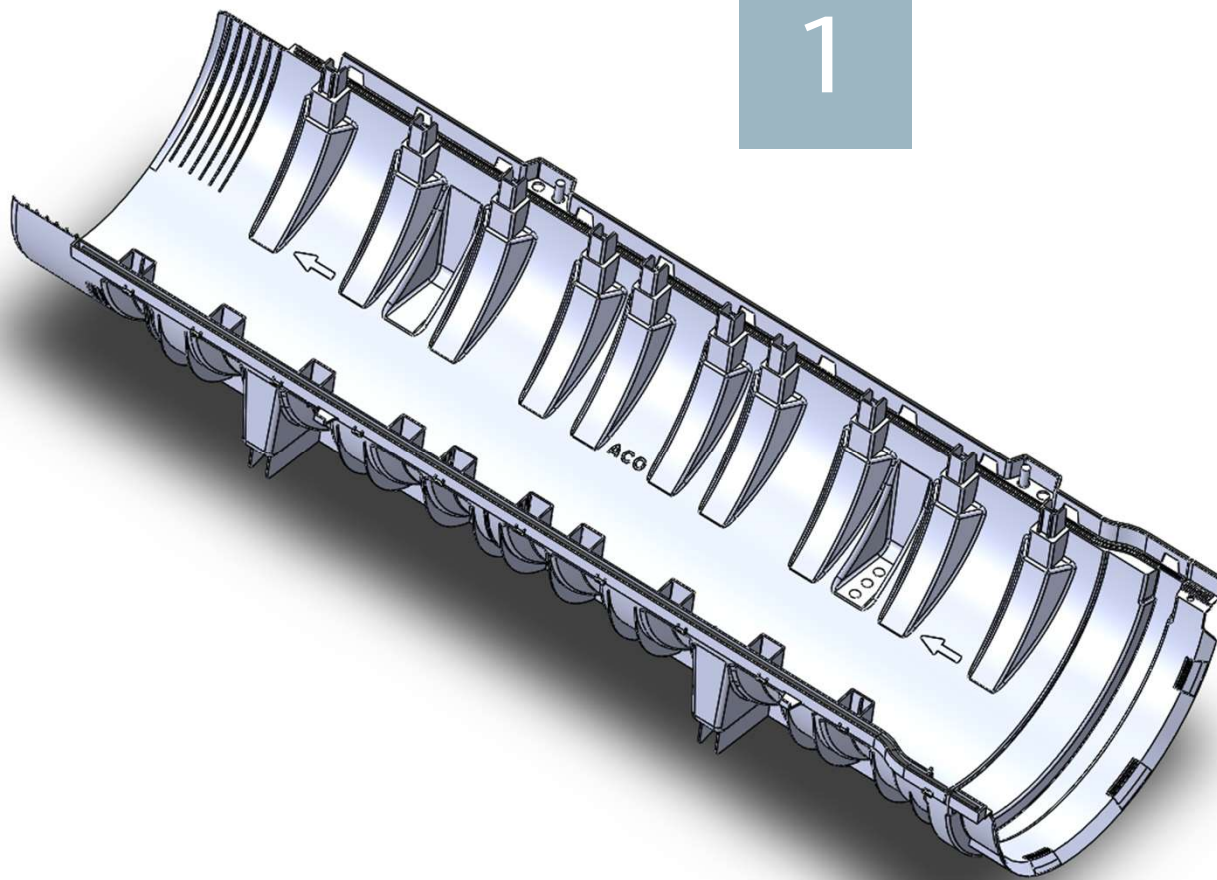
Qmax Neo 300 Step by Step

Assembly Qmax Neo, 11.08.2020

Arne Meincke



1

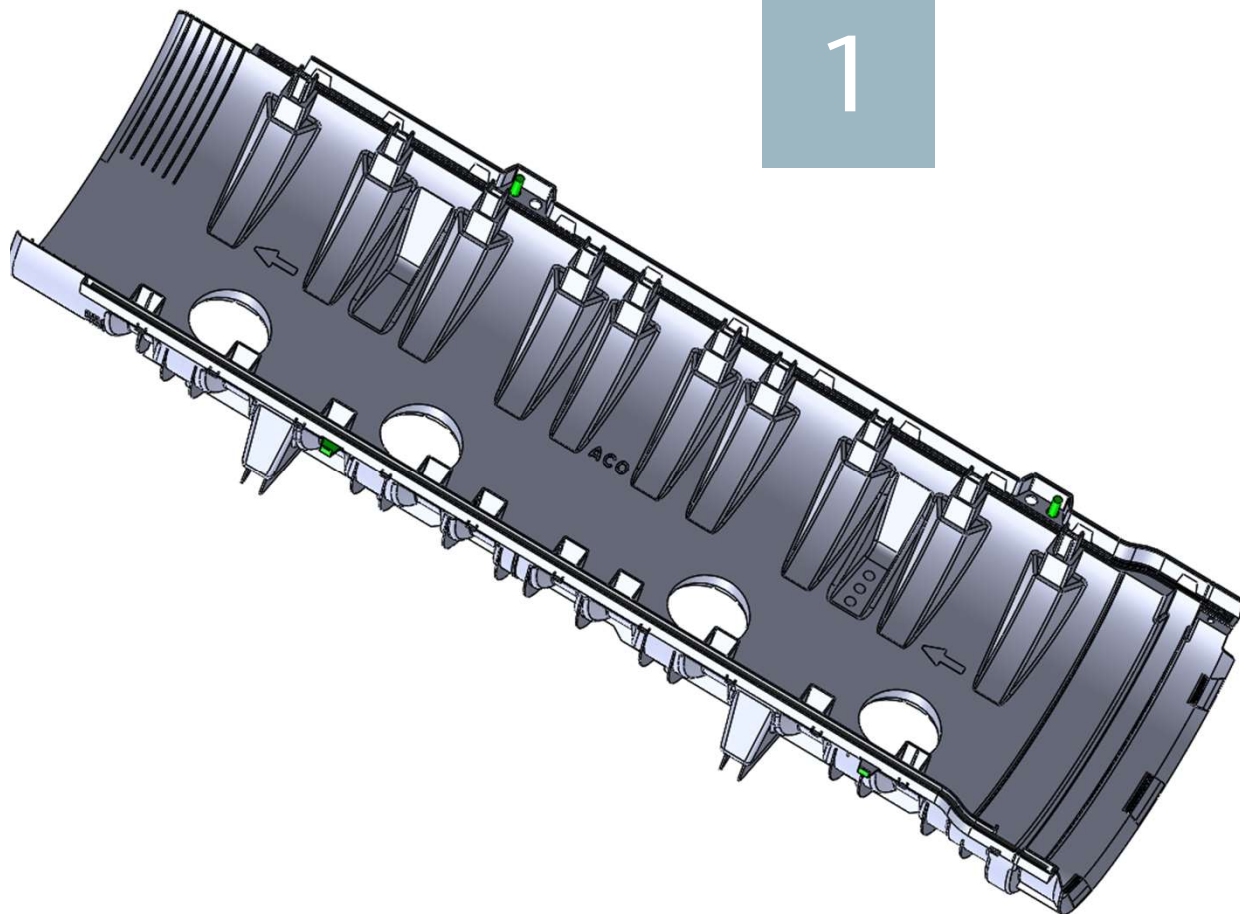


Main Body

Bottom half
PNo: 157401



1

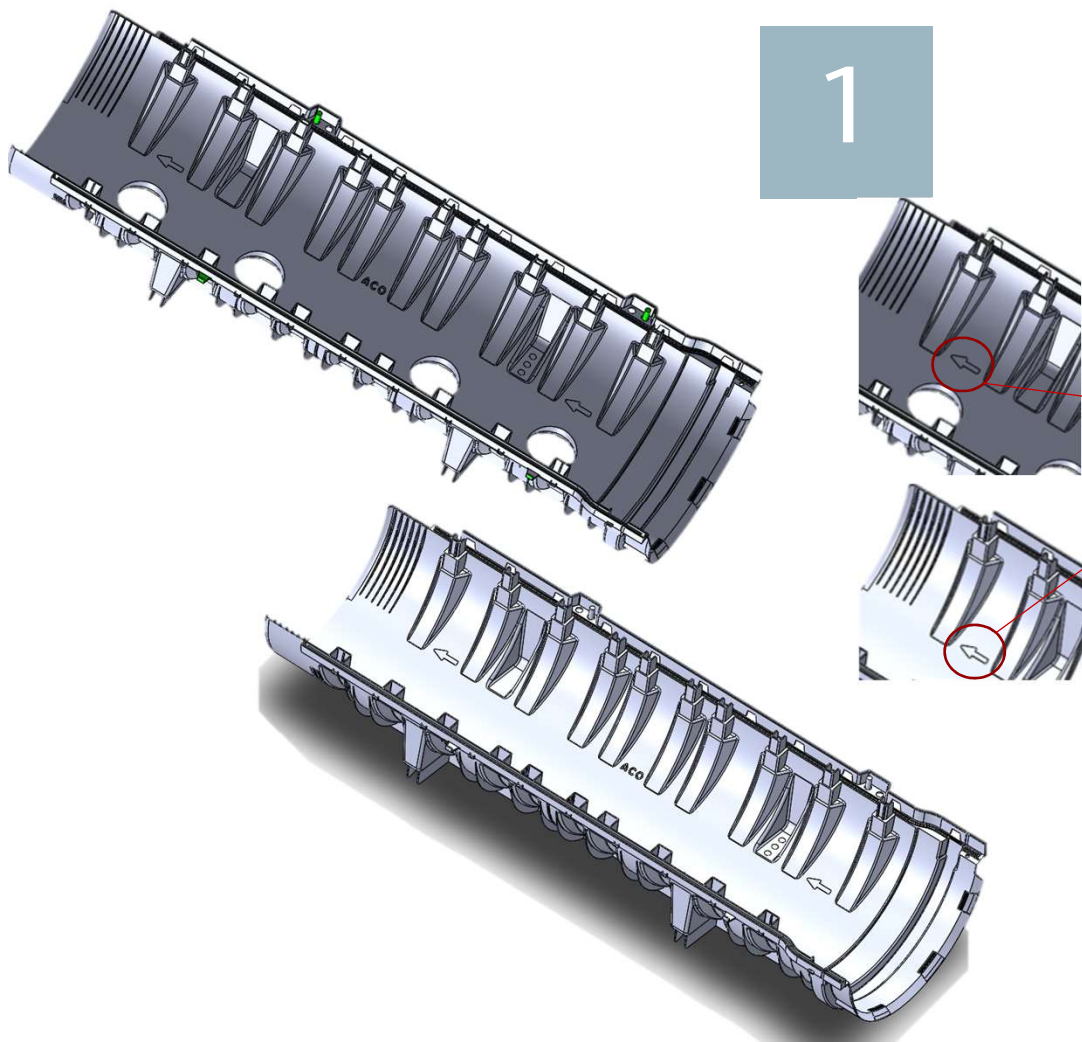


Main Body

Upper half
PNo: 157402



1



Main Body

Before joining
Mind the flow direction



1

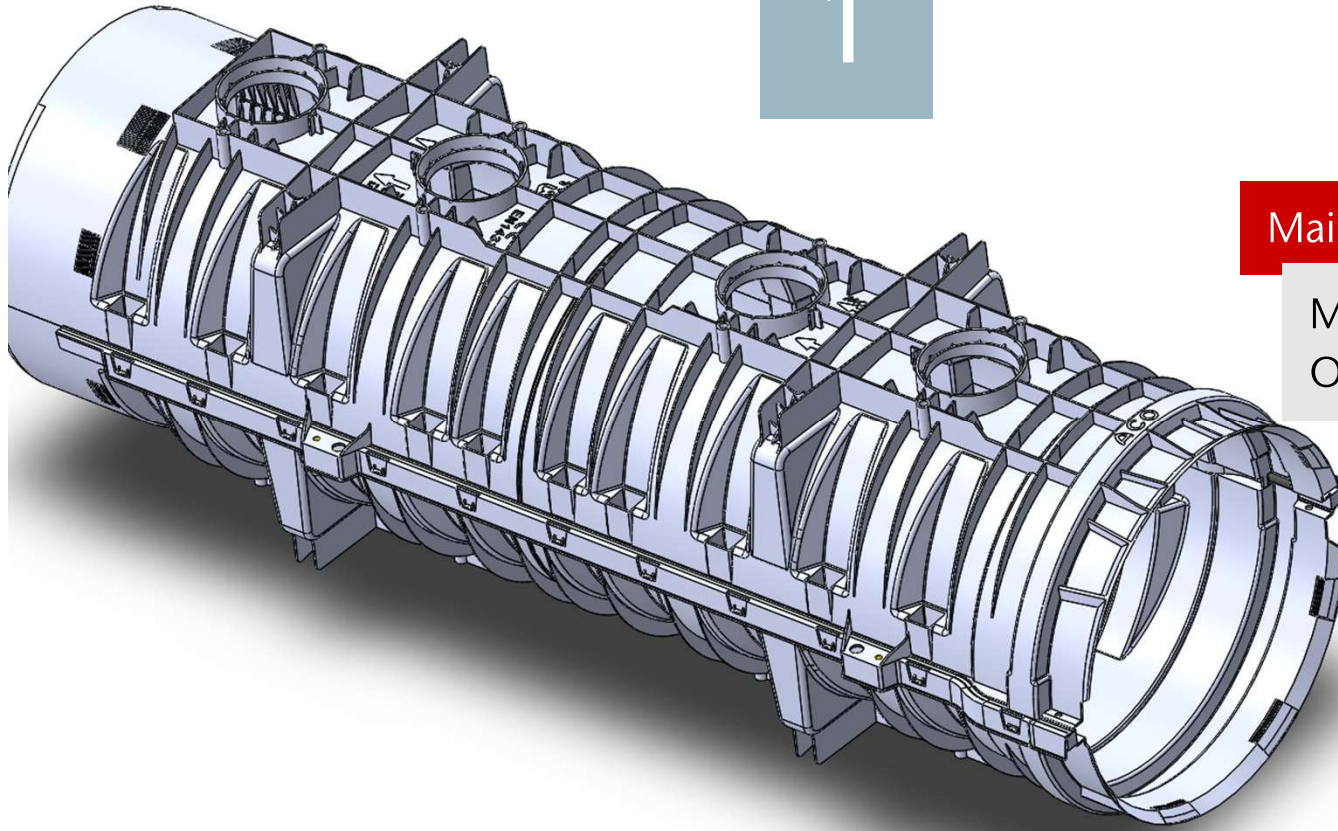
Main Body

While joining
Mind the clip snaps

Press on both sides separately down

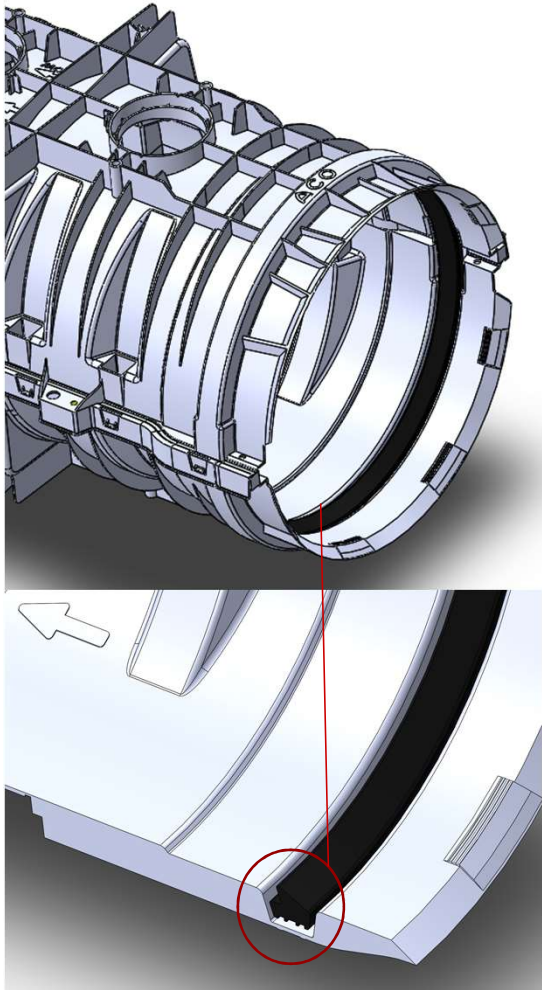


1



Main Body

Make sure all clips
On both sides have snapped



2

Installing seal ring

Mind the lib
direction
PNo: 157404

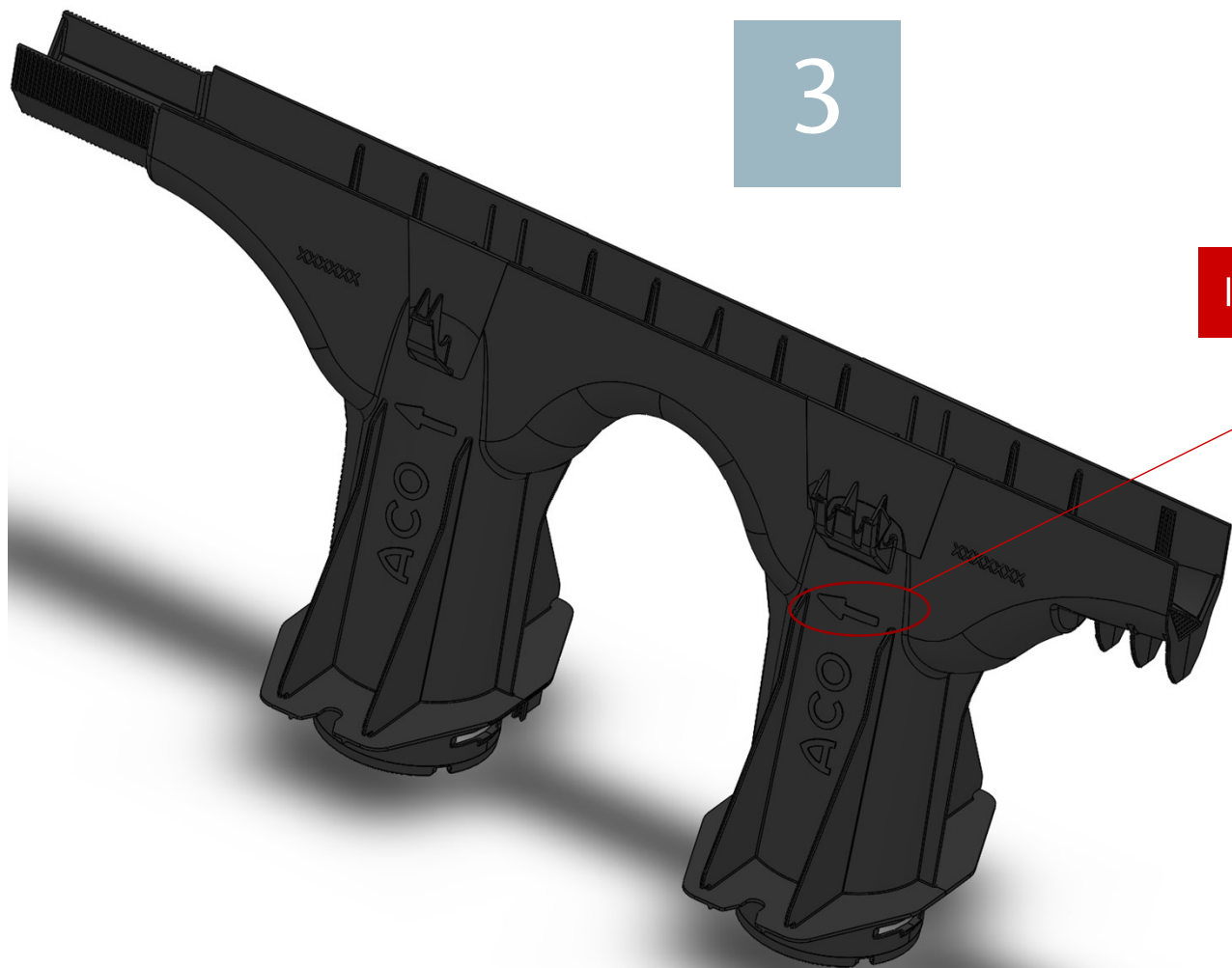
Flow direction



3

Installing Inlet

Mind the flow
direction
PNo: 157005



3.1

Installing Inlet

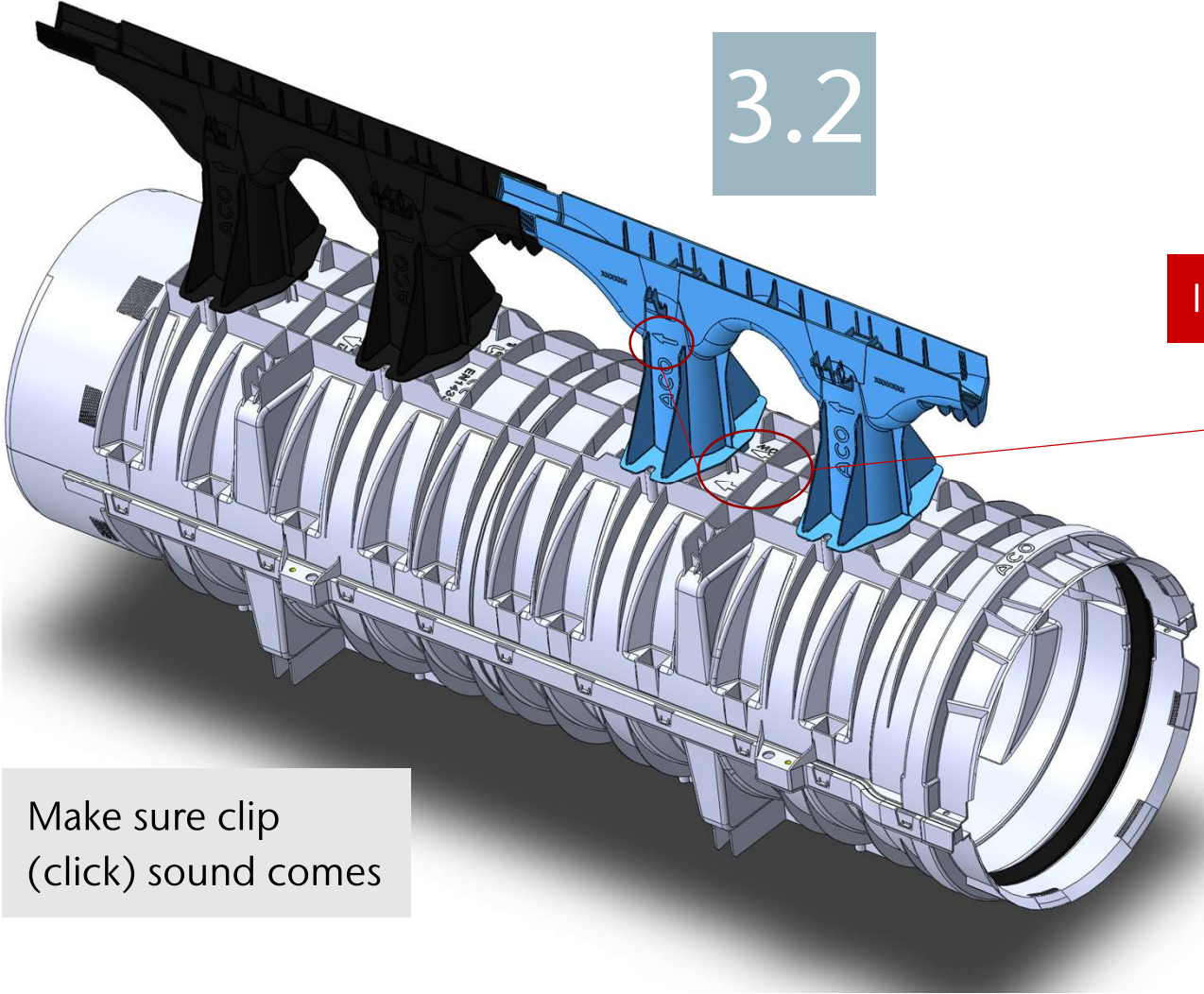
Mind the flow direction
PNo: 157005

Make sure clip
(click) sound comes

Note: High force and parts break off → you have assembled against flow direction



3.2



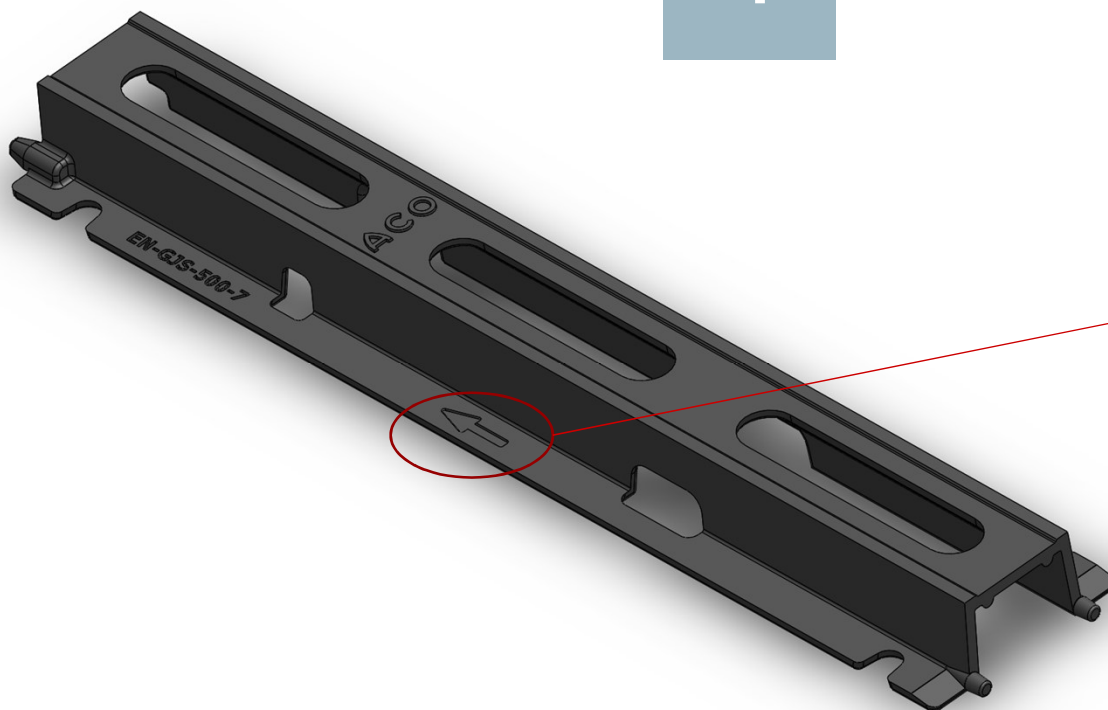
Installing Inlet

Mind the flow direction
PNo: 157005

Make sure clip
(click) sound comes



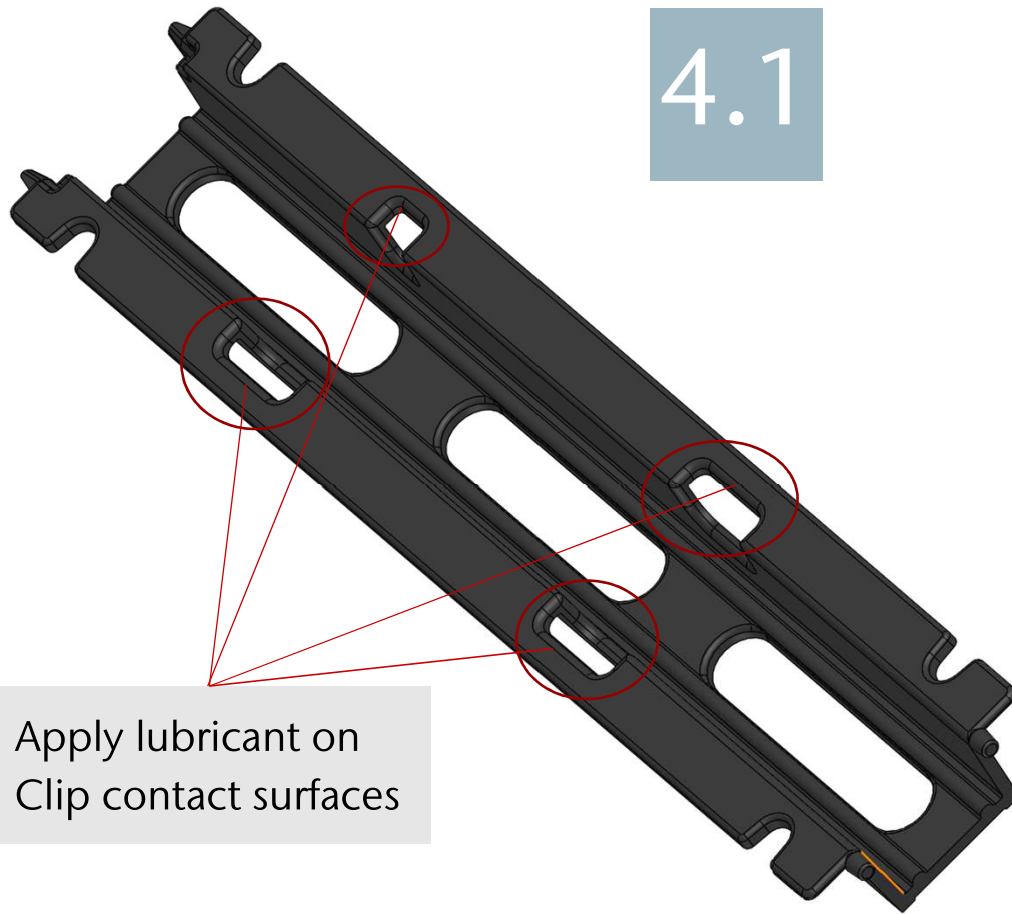
4



Installing Cast Iron Rail

Mind the flow
direction
PNo: 157411

4.1



Apply lubricant on
Clip contact surfaces

Installing Cast Iron Rail

Preparation
PNo: 157411

4.2

Make sure rail is installed
pure vertical
and all 4 clips at once

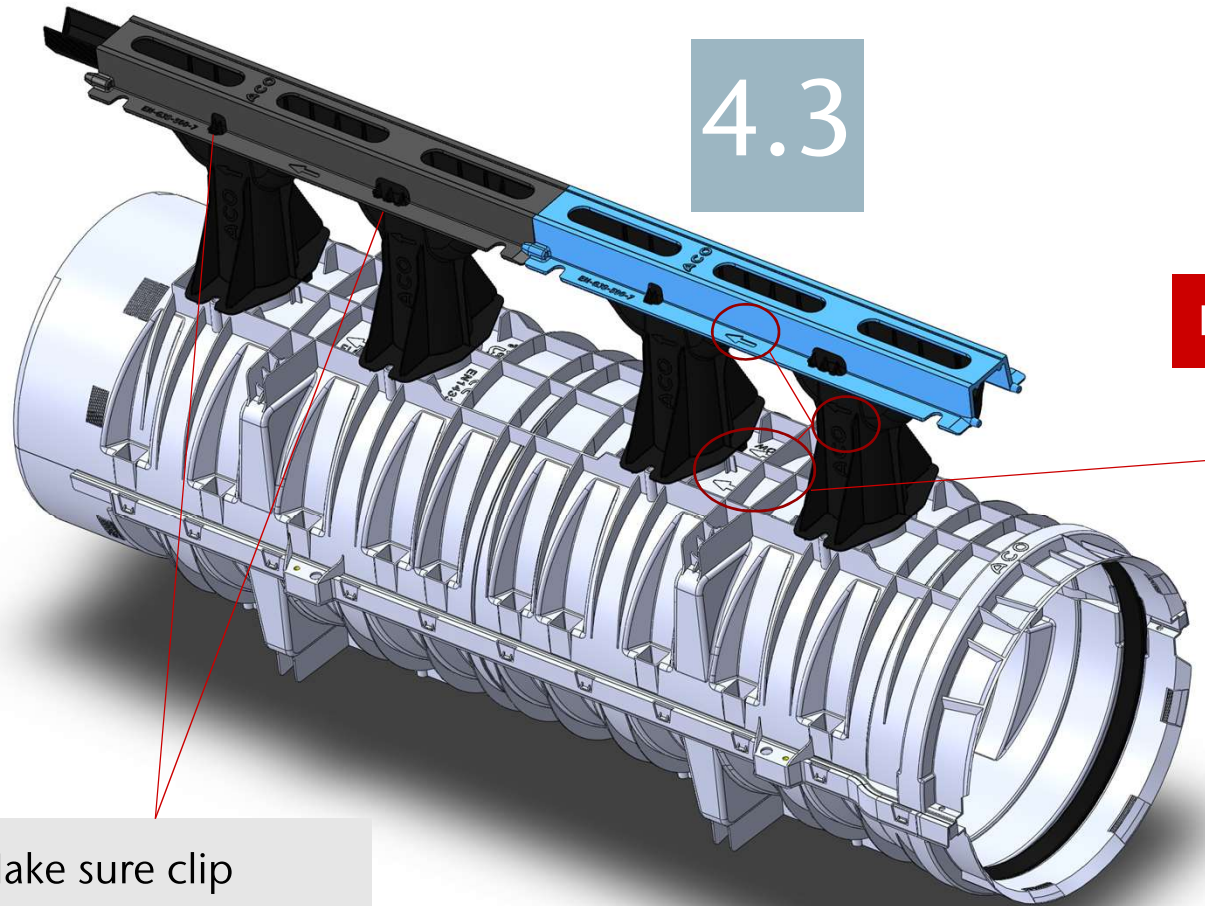
Installing Cast Iron Rail

Mind the flow
direction
PNo: 157411

Make sure clip
(click) sound comes

Note: High force and parts break off → use more lubricant; watch out for pure vertical





4.3

Make sure rail is installed
pure vertical
and all 4 clips at once

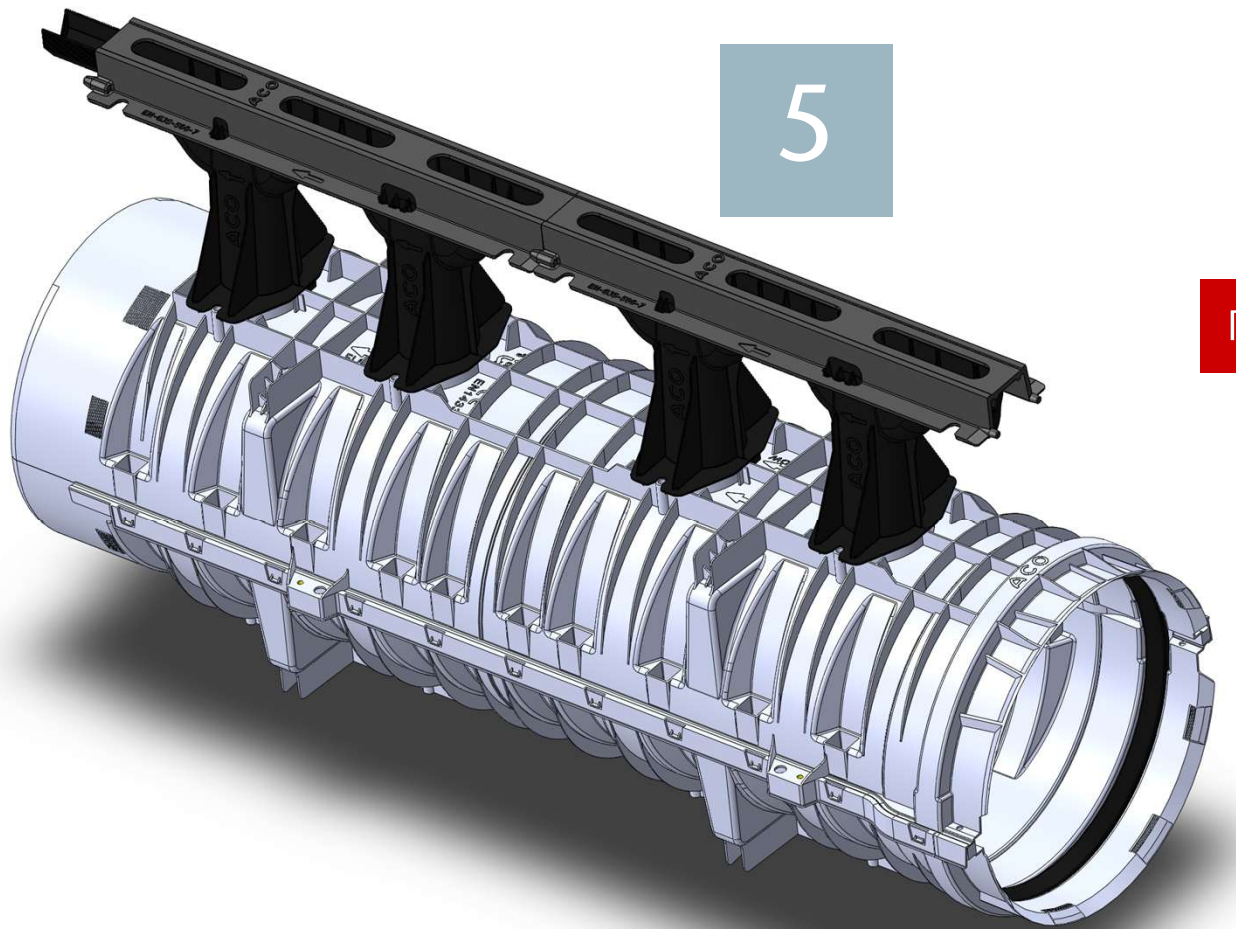
Installing Cast Iron Rail

Mind the flow
direction
PNo: 157411

Make sure clip
(click) sound comes

Note: High force and parts break off → use more lubricant; watch out for pure vertical





5

Part ready

PNo: 157009



**ACO. creating
the future of drainage**



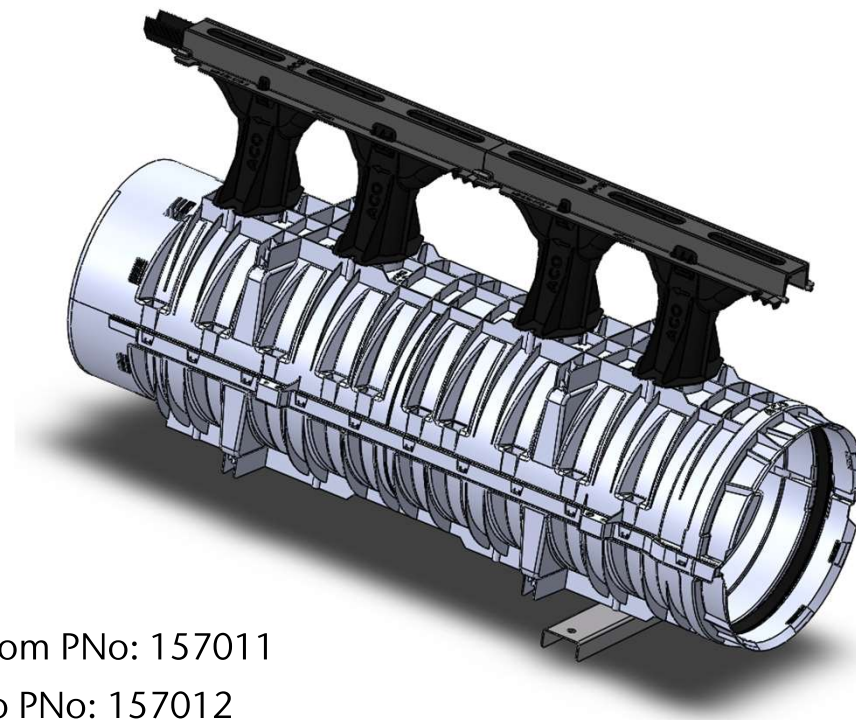


ACO. creating

the future of drainage

Assembly Qmax Neo 300 - (157012)





How to assemble

From PNo: 157011
To PNo: 157012

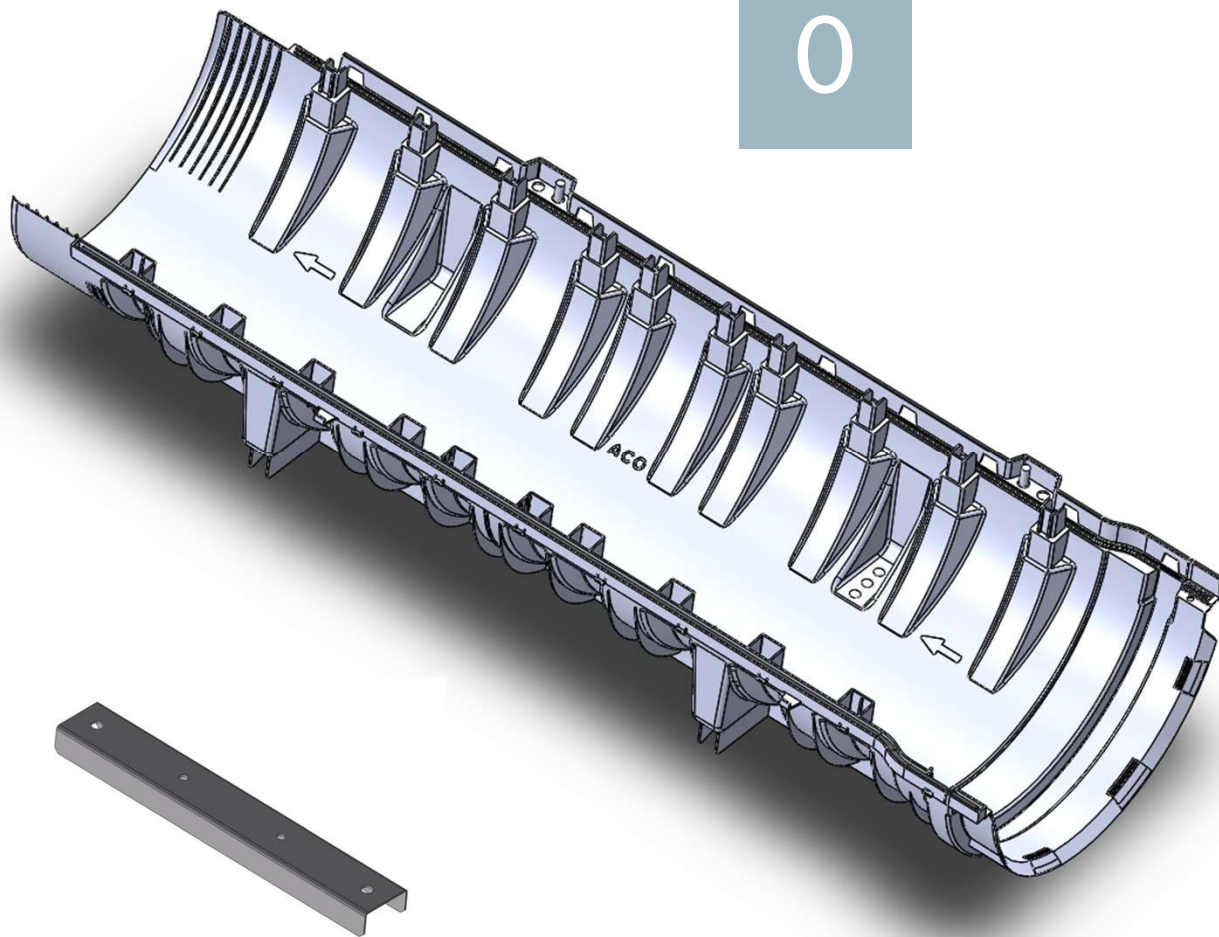
Qmax Neo 300 Step by Step

Assembly Qmax Neo, 11.08.2020

Arne Meincke



0



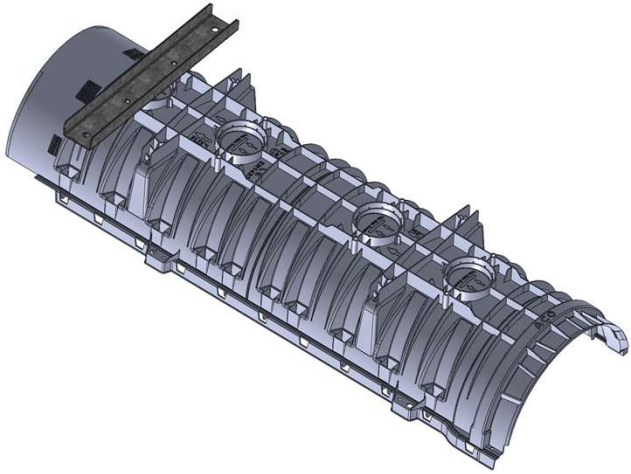
Assembly small foot

Bottom half

PNo: 157401+157415



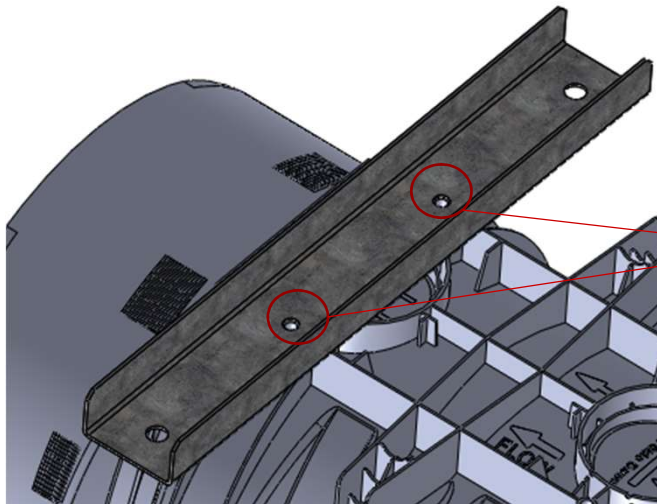
0.1



Assembly small foot

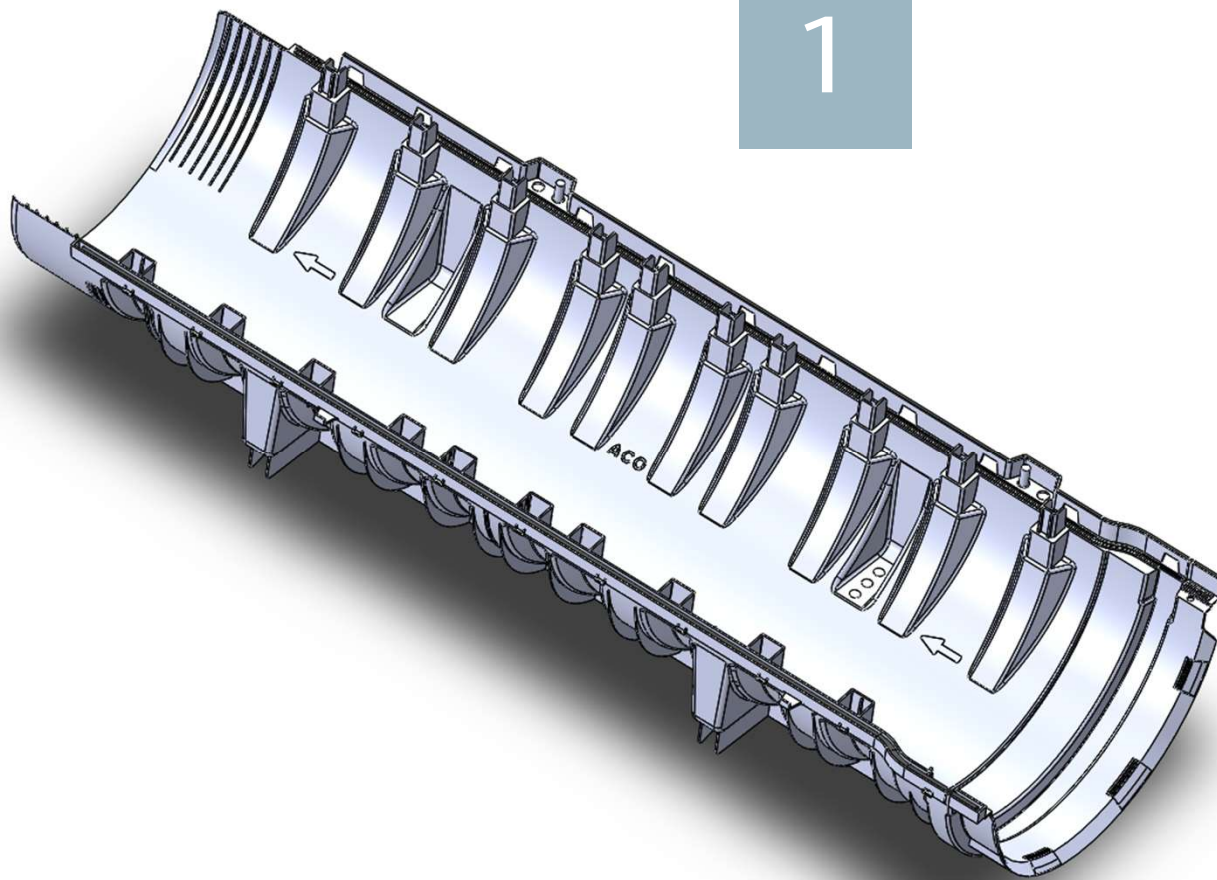
Bottom half

PNo: 157401+157415



Use 2x Bolt M8x16 (Pno: 157419)
Preferred hexagon socket for
easy use of power tool

1

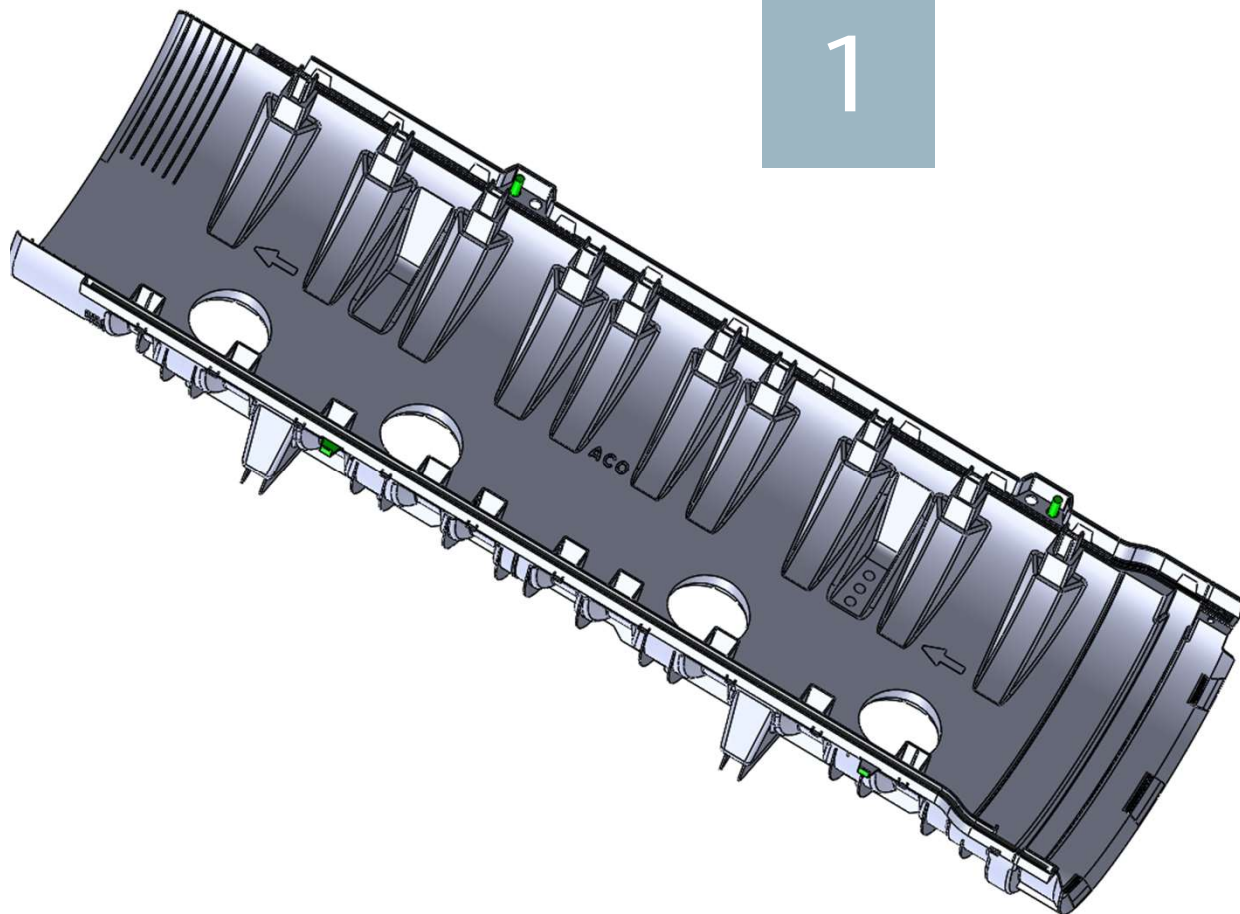


Main Body

Bottom half
PNo: 157401



1

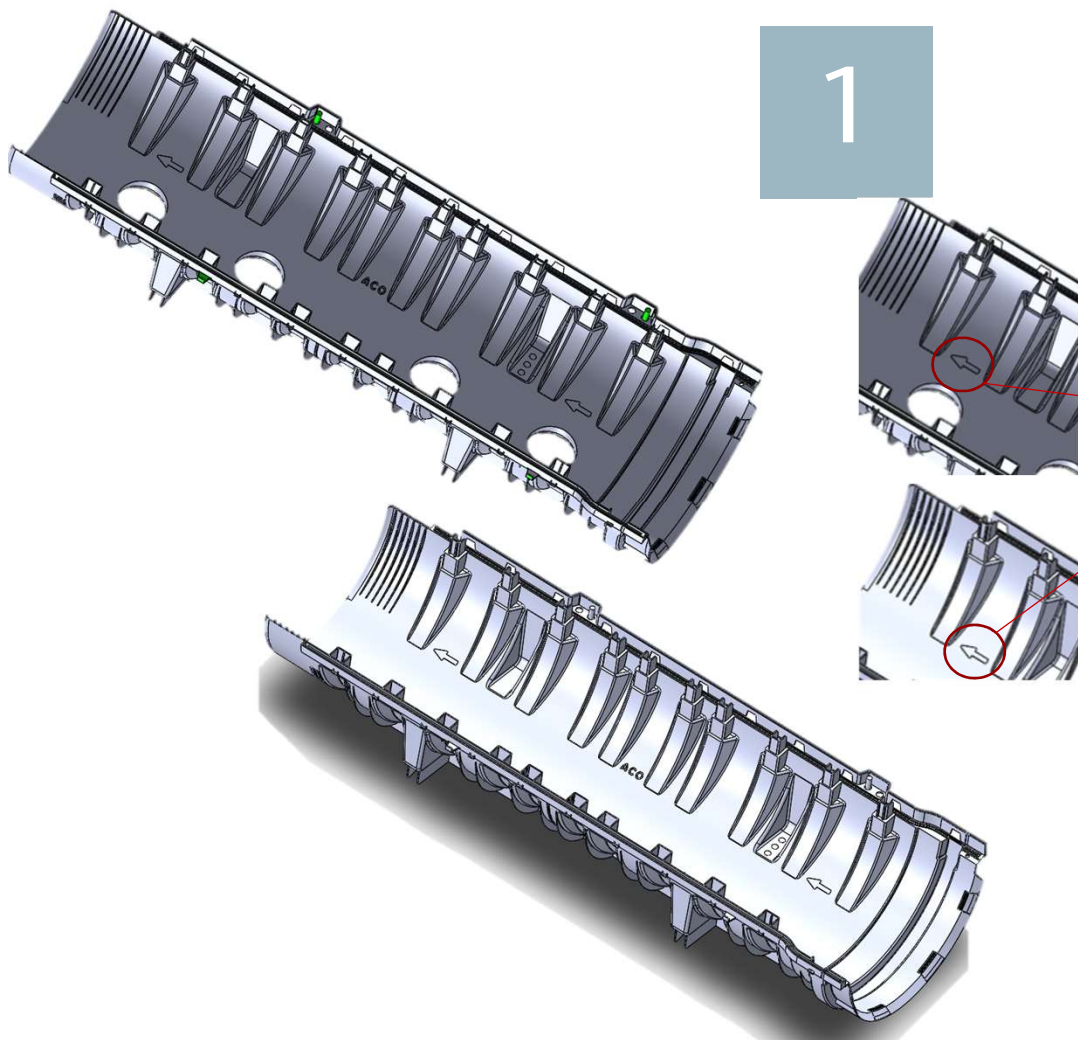


Main Body

Upper half
PNo: 157402



1



Main Body

Before joining
Mind the flow direction



1

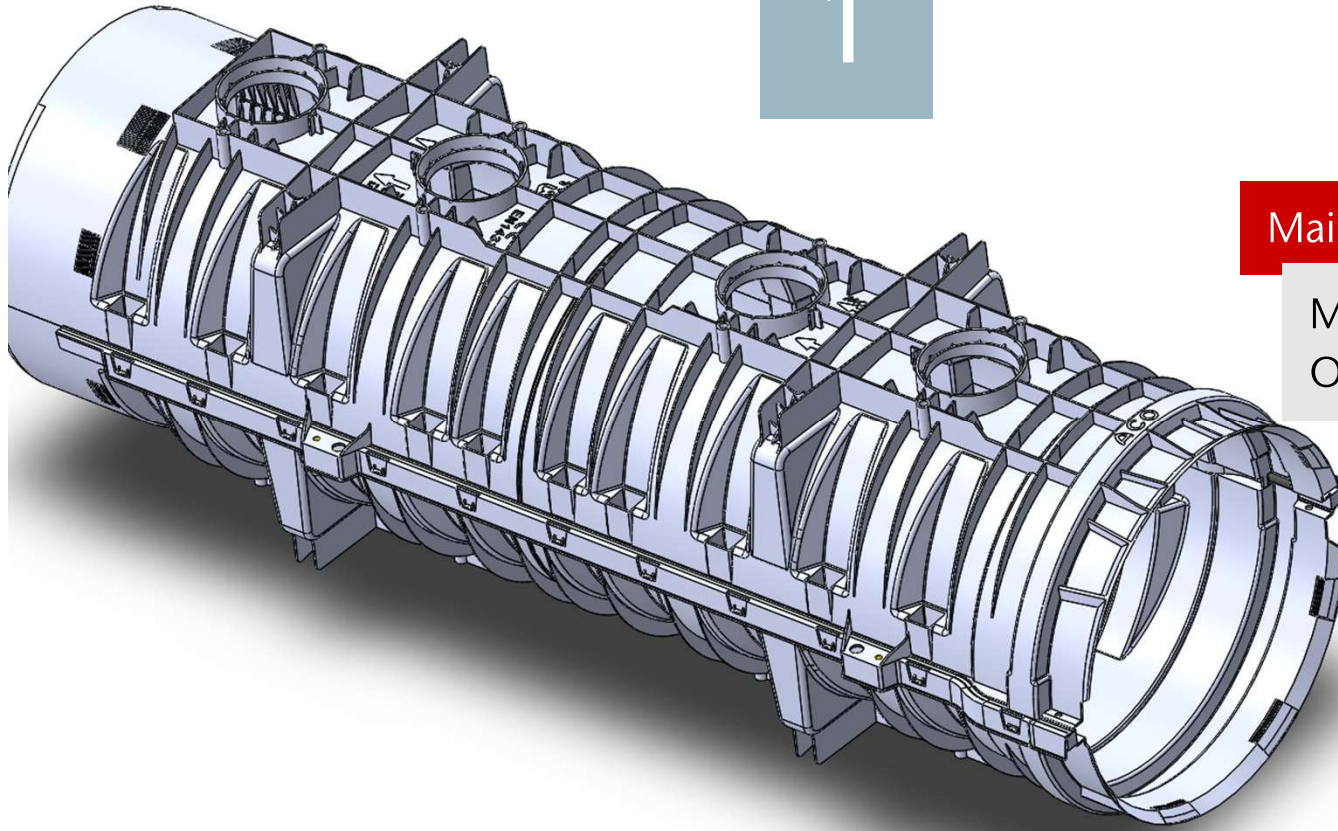
Main Body

While joining
Mind the clip snaps

Press on both sides separately down

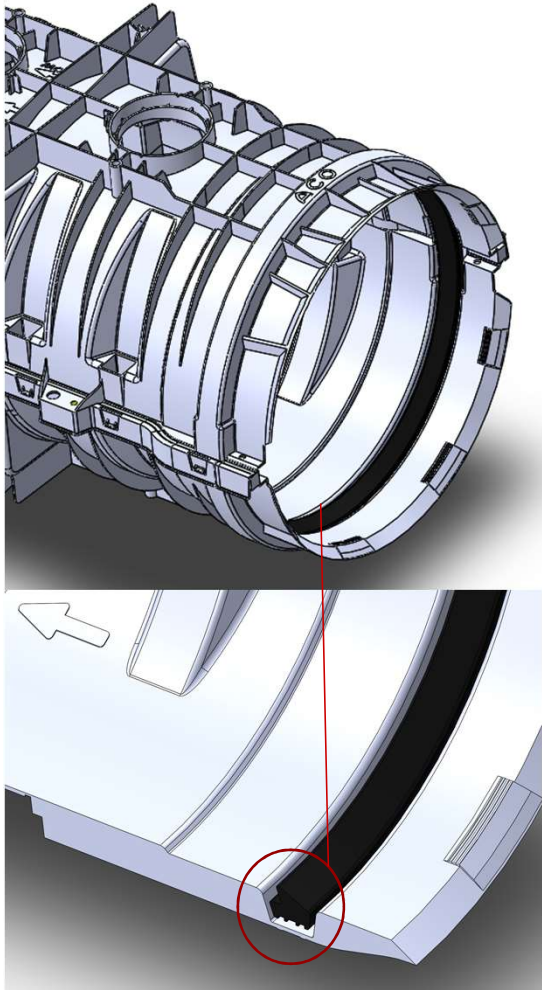


1



Main Body

Make sure all clips
On both sides have snapped



2

Installing seal ring

Mind the lib
direction
PNo: 157404

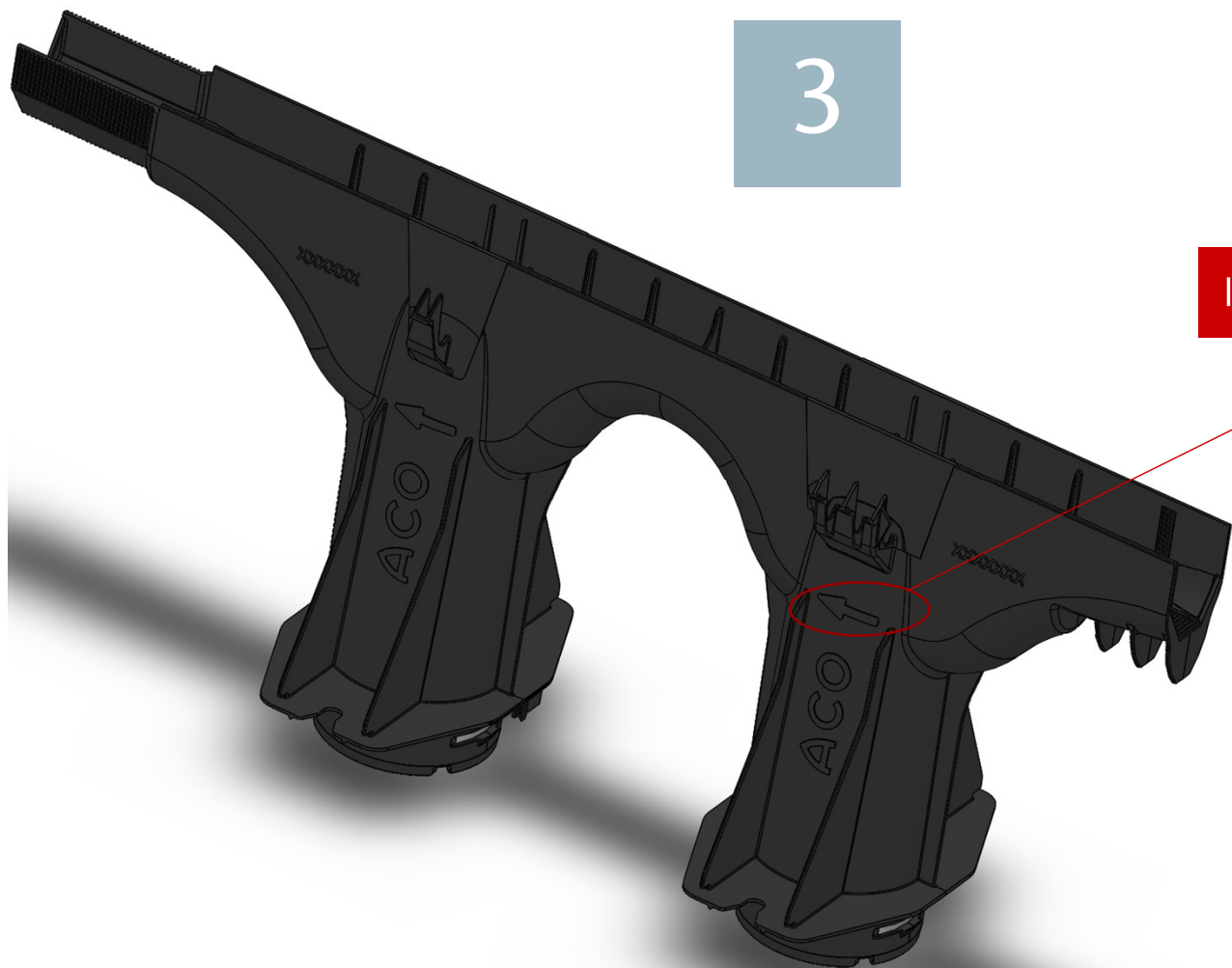
Flow direction



3

Installing Inlet

Mind the flow
direction
PNo: 157005



3.1

Installing Inlet

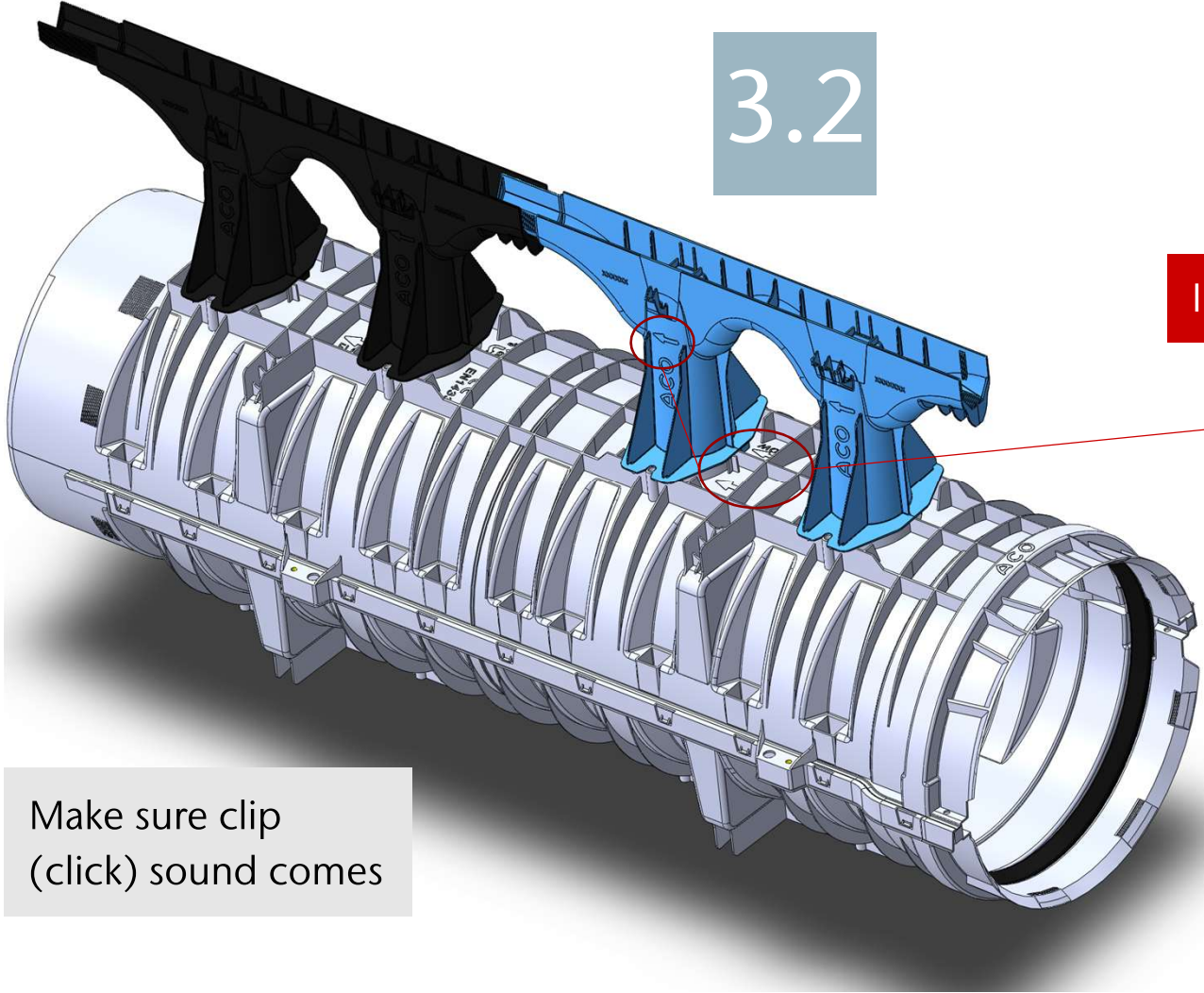
Mind the flow direction
PNo: 157005

Make sure clip
(click) sound comes

Note: High force and parts break off → you have assembled against flow direction



3.2

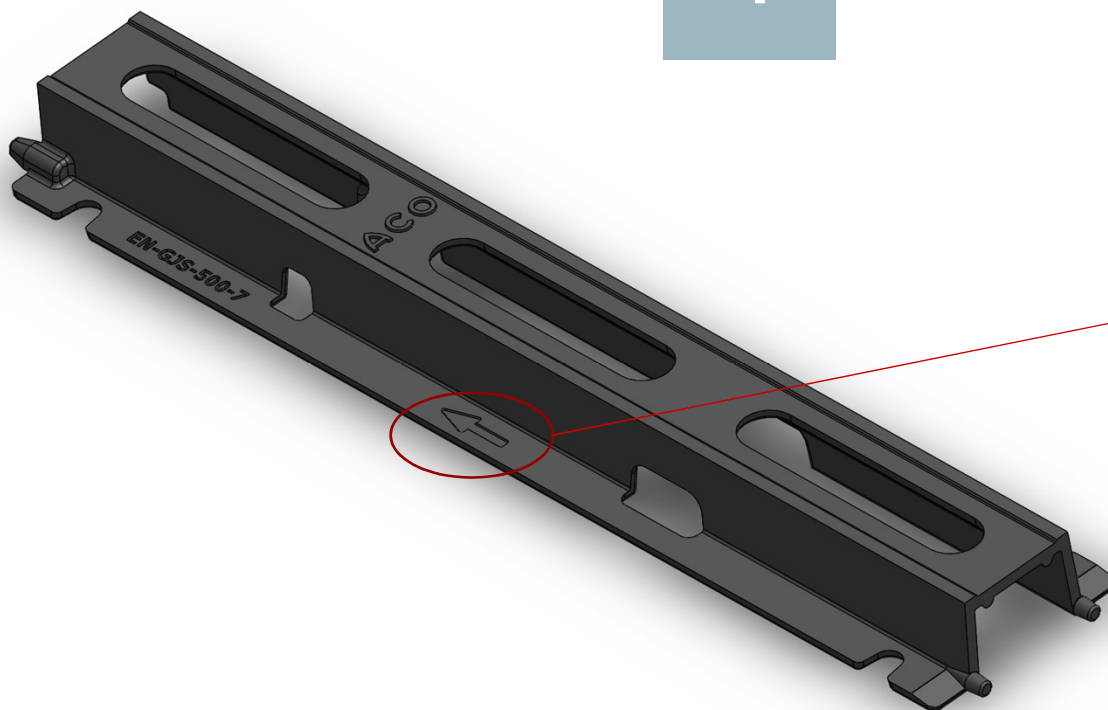


Installing Inlet

Mind the flow direction
PNo: 157005

Make sure clip
(click) sound comes

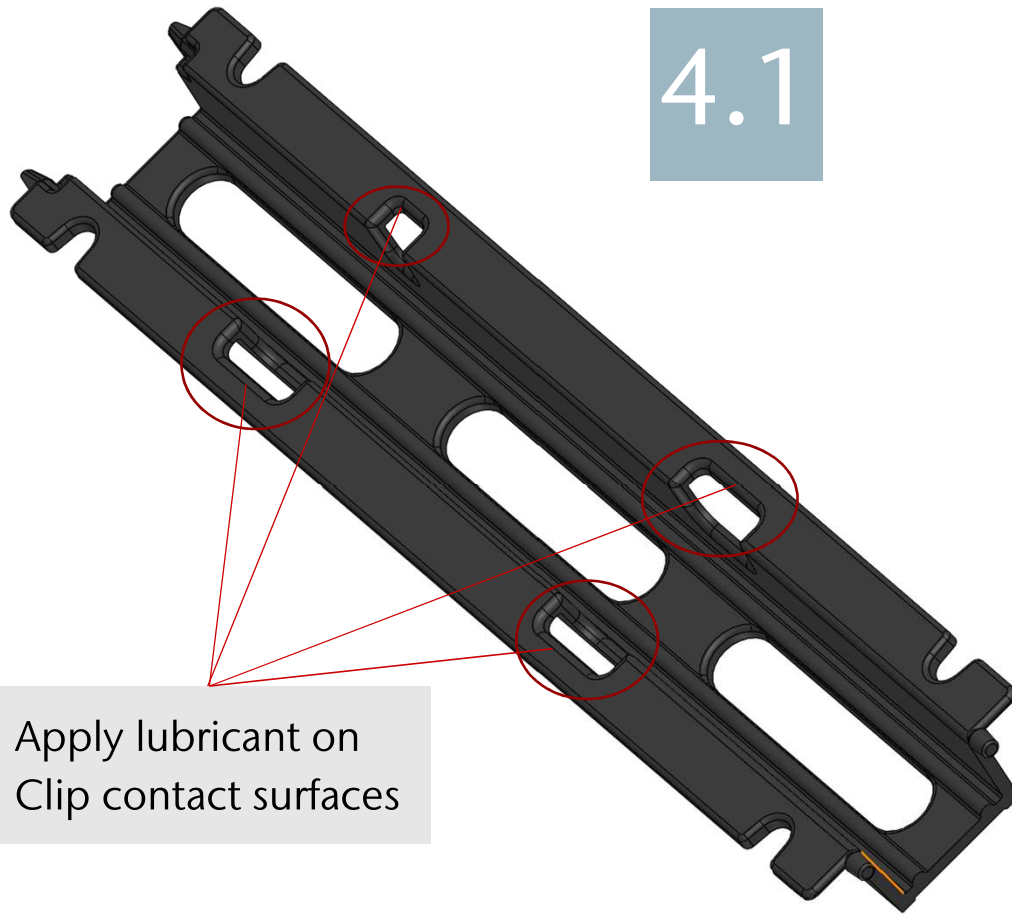
4



Installing Cast Iron Rail

Mind the flow
direction
PNo: 157411

4.1



Apply lubricant on
Clip contact surfaces

Installing Cast Iron Rail

Preparation
PNo: 157411

4.2

Make sure rail is installed
pure vertical
and all 4 clips at once

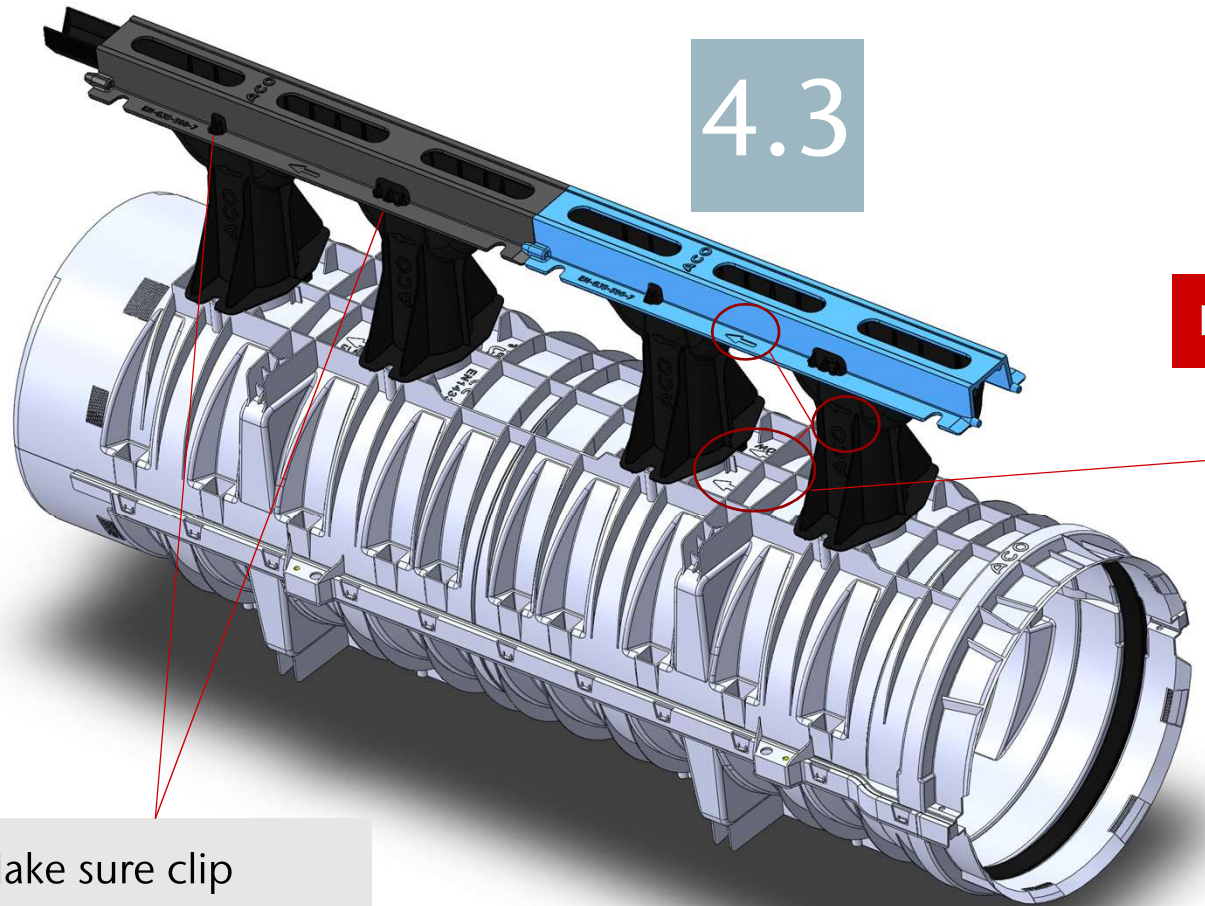
Installing Cast Iron Rail

Mind the flow
direction
PNo: 157411

Make sure clip
(click) sound comes

Note: High force and parts break off → use more lubricant; watch out for pure vertical





4.3

Make sure rail is installed
pure vertical
and all 4 clips at once

Installing Cast Iron Rail

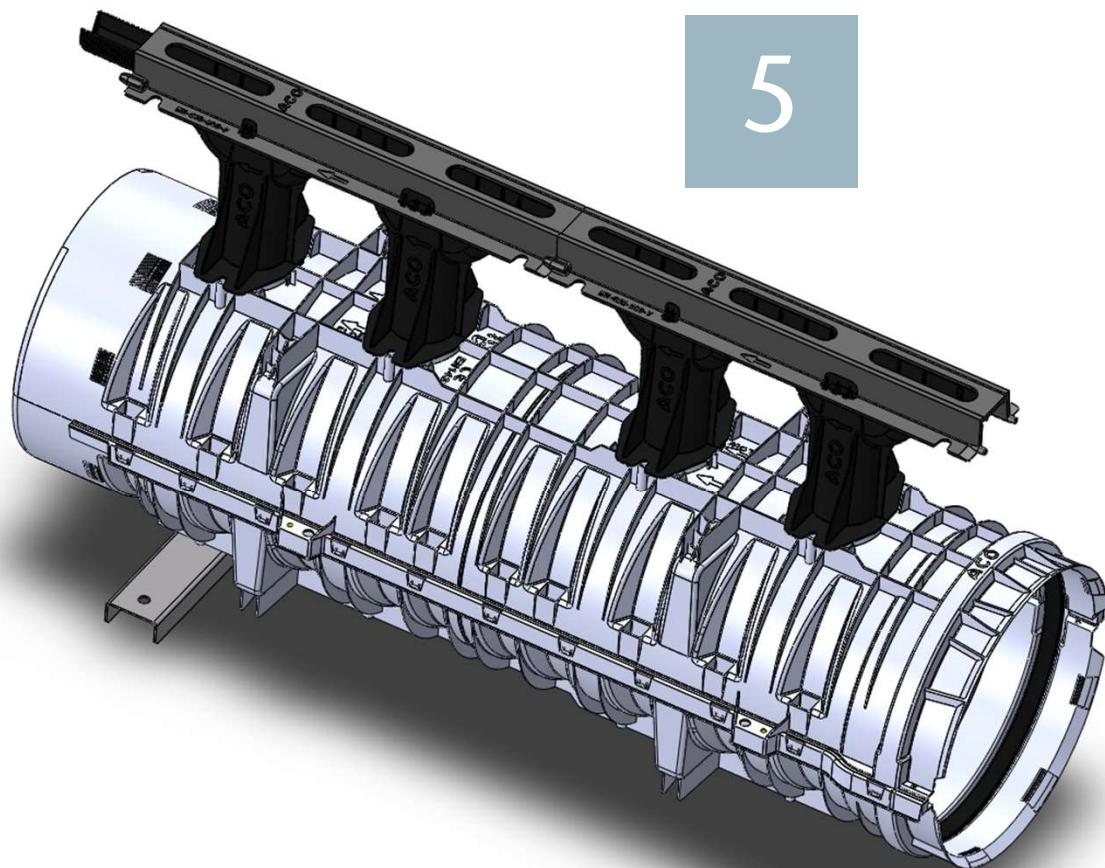
Mind the flow
direction
PNo: 157411

Make sure clip
(click) sound comes

Note: High force and parts break off → use more lubricant; watch out for pure vertical



5



Part ready

PNo: 157012



**ACO. creating
the future of drainage**

