

Sustainable. Innovative. Diverse.

ACO at the GaLaBau 2022



# Sustainable. Innovative. Diverse.

## ACO at GaLaBau 2022

### Efficient rainwater management for the future

Whether urban spaces, private gardens, parks or even sports facilities - the future lies in efficient rainwater management that is both functional and beautiful. In terms of functionality, contemporary drainage systems must fulfill the four fundamental tasks in dealing with rainwater - safe transport, cleaning, reliable storage or infiltration and local drainage.

In terms of aesthetics, squares and paths are additionally set in scene. Individual designs or accentuation through illumination underline architecture and surface structure. ACO is focusing on a sustainable future with its new corporate message “ACO. we care for water”.

2

It strives to establish efficient and innovative products in rainwater management with modern solutions. As a system provider for gardening and landscaping, we will be showing products from the competence areas of line, point and facade drainage, rainwater management, manhole covers, tree protection and individual system solutions at GaLaBau 2022 in Hall 4-309.

We look forward to your visit.



# ACO. we care for water

## Partner of the gardening, landscaping and sports ground construction associations

Schleswig-Holstein e.V., Hamburg e.V.,  
Mecklenburg-Vorpommern e.V., Niedersachsen-Bremen e.V.,  
Sachsen-Anhalt e.V., Berlin und Brandenburg e.V.,  
Nordrhein-Westfalen e.V., Hessen-Thüringen e.V.,  
Sachsen e.V., Rheinland-Pfalz u. Saarland e.V.,  
Baden-Württemberg e.V., Bayern e.V.



Ihre Experten für  
Garten & Landschaft



ACO participates in the campaign  
“The Green-Blue Path”



# Products and innovations at GaLaBau

## ACO DRAIN® Multiline Seal in

Multiline Seal in is equipped with a seal at the channel joint as standard. In combination with the Voronoi cast iron grating, new design possibilities are created. The French designer Franc Magné created this unusual design. Inspired by the beauty of nature, the unique appearance was created from geometric shapes. The pattern is similar to the spots on a giraffe, dragonfly wings or cracks in dried earth. The material of the grating is an alloy of iron and carbon - a robust material with excellent corrosion resistance. A dipping lacquer or KTL coating rounds off the look. A visual highlight for the drainage of open spaces, gardens and parks.

ACO Tiefbau



# ACO. we care for water

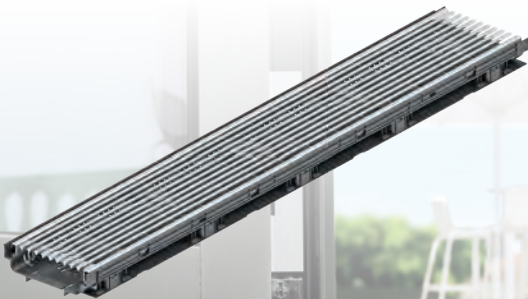
## ACO Profiline X

The ACO Profiline X, a further development of the ACO Profiline metal channel, is made of corrosion-resistant glass-fibre reinforced plastic (PP-GF). A stainless steel cover ensures an attractive appearance from above. With the successful combination of PP-GF and stainless steel, ACO meets both the changing environmental influences and the desire of many building owners for channel covers made of stainless steel.

### **The ACO Profiline X facade channel keeps its promise:**

- combinable with the Profiline gratings in stainless steel and galvanised steel
- no contact corrosion
- new type of grate centring through spacers

ACO Hochbau



# Products and innovations at GaLaBau

## ACO Gravel Grid

The ACO gravel Grid is an ecological ground stabilisation system that can be used to fix gravel and chippings in an environmentally friendly and visually appealing way. It creates a strong and stable base for the professional spreading of gravel. The honeycomb structure holds the gravel securely in place, for stable and water-permeable surfaces without wheel tracks. When properly laid, the result is an area that is stable enough to be walked on and driven over.

The products ACO Gravel Grid eco and the ACO Self® Gravel Grid eco in sizes S and M have been awarded the German label 'Blue Angel', due to the environmentally friendly production of the honeycombs from 100 % recycled plastic (PP). ACO is thus setting a milestone in the field of sustainability and is making a significant contribution to reducing plastic waste and limiting pollutants.

6

ACO Hochbau

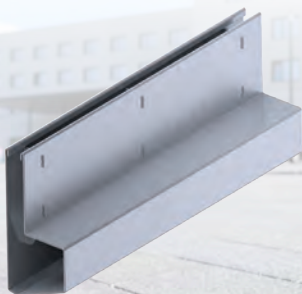


# ACO. we care for water

## Slot channels for open spaces

ACO Inotec slot channels made of stainless steel and galvanised steel for open spaces and squares are manufactured individually. The installation effort is considerably reduced due to dimensionally accurate fitting pieces. The slot channels comply with DIN EN 1433 in load classes A-D. In addition to factory-made corners and mitres, the range also includes welded end pieces and plug-in connectors for quick installation without height offset. Optionally, watertight flange connections or transition pieces to other types of channels can be made. There are practically no limits to individuality. Double slot widths through welded-in centre webs, for example, increase the swallowing capacity. Inspection boxes that can be paved out for selected tile grids or for perforated, water-permeable surface coverings round off the range.

ACO Inotec



# Products and innovations at GaLaBau

## ACO Drain®Box

Particularly during heavy rainfall, low-lying water can cause problems in traffic areas both inside and outside the city. With the Drain®Box, ACO has created a drainage concept that defuses flooding hotspots with little effort.

The ACO Drain®Box is a combination of point drainage with the ACO Combipoint PP road gully and line drainage with the ACO KerbDrain hollow shelf channel.

ACO Tiefbau





# ACO. we care for water

## ACO SPORT® filtration shaft

The ACO SPORT® filtration shaft combines a defined sedimentation zone with a substrate filter stage. It is easy to control and clean through a central access pipe. The height difference between inlet and outlet is only 30 cm. The filter material is contained in easily accessible, replaceable cartridges. The treatment system can be used in playgrounds, sports & leisure facilities and traffic areas. The filter system can be designed in accordance with DWA-M 153 as well as DWA-A 102. Even heavily polluted water can be treated and discharged directly into surface water or groundwater.

### Product information

- multi-stage storm water treatment system using the upflow method
- patented calming and distribution zone to prevent remobilisation of pollutants and uniform distribution across the substrate filter stage
- adsorption of dissolved pollutants

ACO Inotec



# Products and innovations at GaLaBau

## ACO Stormbrixx

Groundwater recharge as well as the retention and controlled release of rainwater to the receiving water are central topics in rainwater management. A block drainage system is the optimal solution.

ACO Stormbrixx is a modular plastic infiltration system that acts as an underground storage for rainwater. The water can gradually seep into the ground if the system is wrapped with a geotextile. If a waterproofing membrane is used, an underground tank is created from which the water is released to the receiving water with a time delay using throttle units. This relieves the pressure on the sewer system.

## ACO Tiefbau



# ACO. we care for water

## ACO Rain4me

The use of rainwater in House and Garden is a sensible and environmentally friendly way of relieving the pressure on groundwater supplies and takes account of the increasing demand for drinking water. Rainwater is a precious resource for garden irrigation and also for use in WC flushing or washing machines. The ACO Rain4me system offers components for both applications.

ACO Rain4me rainwater tanks are installed underground and can be flexibly arranged according to the size of the garden. By combining several rainwater tanks, the volume can be optimally adapted to the use and available space - and can also be easily enlarged at any time.

## ACO Hochbau



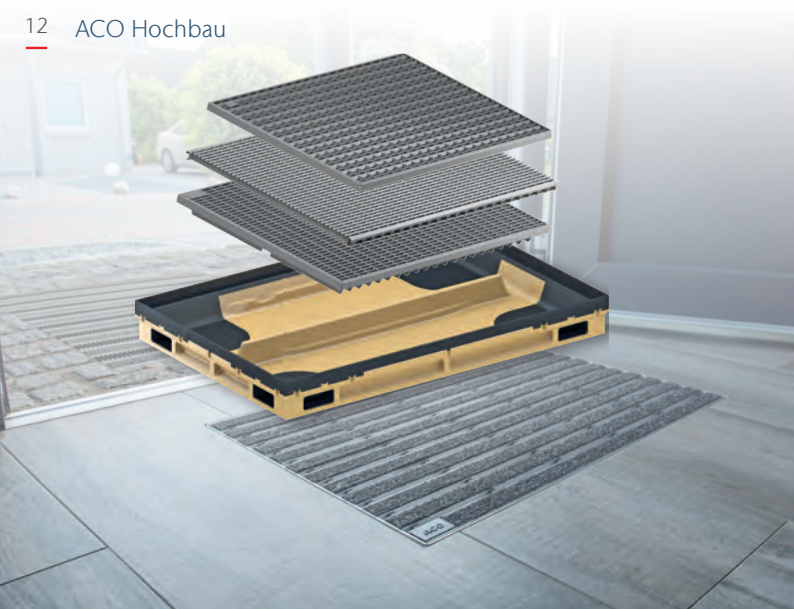
## Products and innovations at GaLaBau

### ACO shoe scraper

#### **Sneak Preview at the GaLaBau!**

At the trade fair in Nuremberg, we will exclusively show our new, optimised shoe scraper system, which will be launched in January 2023. Let the unique features inspire you in advance!

The modularity allows an optimal adaptation of the shoe scraper to paving, door and tiles. Even diverse or large solutions can be realised with it. In these cases, only one drainage connection per system is required to connect it to the underground pipe or infiltration. The redesigned, hybrid shoes scraper body makes cleaning the system much easier. The shoe scraper is completed by many new mats, gratings and various accessories.



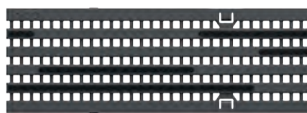
# ACO. we care for water

## ACO Self® Euroline

ACO is expanding its Self portfolio with further three gratings in plastic, stainless steel and galvanised steel. All gratings have a striking design and tool-free grating lock in common.

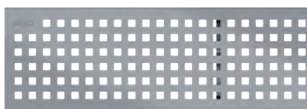
### **Longitudinal plastic grating B125**

A linear grating with microgrip for the private driveway. The black polypropylene plastic is permanently colourfast.



### **Perforated grating "Quadrato"**

An interesting grating made of stainless steel with a high-quality finish that will find its place on the terrace or in the entrance area.



### **Longitudinal profile grating stainless steel or galvanised steel**

A grating with striking longitudinal profiles that exudes a high level of high quality.



ACO Hochbau

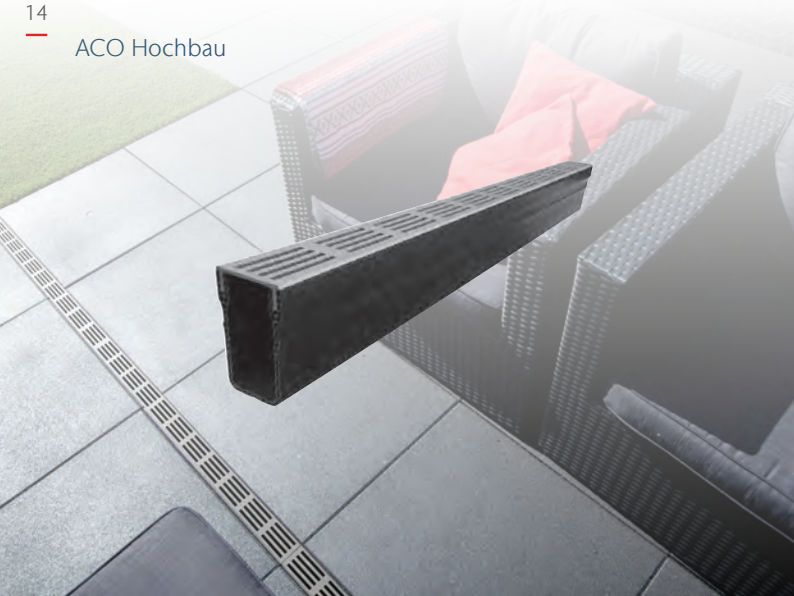
# Products and innovations at GaLaBau

## ACO Slimline

The ACO Slimline is discreet and visibly beautiful at the same time. With a width of only 6 cm, the Slimline drainage system is the perfect solution for unobtrusive patio drainage. The narrow slots ensure that as little dirt as possible gets into the channel. With the gratings made of aluminium (silver or black), corten steel or stainless steel, you set special accents and contribute to the ambiance of the entire patio arrangement. The channel is easy to install and can be connected to infiltration systems or the sewer.

### **A highlight on your terrace!**

- 6 cm narrow gutter with grating
- quick installation due to click fittings
- good concrete anchoring
- connections DN 50 or DN 110 possible
- grating is very easy to remove for cleaning the gutter



# ACO. we care for water

## Contact Persons

### **Public Relations ACO Tiefbau**

Please contact:

#### **Tanja Holst**

Tel.: +49 4331 354-197

Mobil: +49 151 64738331

tanja.holst@aco.com

### **Public Relations ACO Hochbau**

Please contact:

#### **Ralph Kelkel**

Tel.: +49 4331 354-394

Mobil: +49 174 3075179

ralph.kelkel@aco.com

### **Public Relations ACO Inotec**

Please contact:

#### **Riccardo Rieder**

Tel.: +49 4331 354-172

Mobil: +49 173 4769650

riccardo.rieder@aco.com

ACO Ahlmann SE & Co. KG

Postfach 320  
24755 Rendsburg  
Am Ahlmannkai  
24782 Büdelsdorf  
Tel. + 49 4331 354-0  
Fax +49 4331 354-130  
galabau@aco.com

**[www.galabau.aco](http://www.galabau.aco)**

