



SlotTop – functional drainage
in minimalist design

COLLECT:
gather and capture



SlotTop – Drainage through slot grates

| | | | |
|--------------------------------|-------------------------------|------------------|----|
| SlotTop (NW 100 mm) | Single, Double, Triple, Strip | Load class C 250 | 7 |
| | Single | Load class D 400 | 11 |
| SlotTop (NW 150 mm) | Single, Double, Triple | Load class C 250 | 13 |
| | Single | Load class D 400 | 15 |
| SlotTop (NW 200 mm) | Single, Double, Triple | Load class C 250 | 17 |
| | Single | Load class D 400 | 19 |
| | Installation details | | 21 |
| | Maintenance | | 23 |



Declaration of Performance
is available at <https://dop.aco.com>

ACO SlotTop



SlotTop – Designed for aesthetic drainage solutions

Uniqueness and charisma are key considerations included in the architectural planning of outdoor surfaces. Drainage is a significant and important part of a unified surface design. Professional line drainage and grates can influence the design to a great extent. Line drainage ensures effective removal of surface water even in sloped installations, ensuring a visually clean design.

SlotTop for the ACO DRAIN® professional line drainage range was created to enable both “concealed” and “enhanced” drainage. Functionality and aesthetics interconnect in a unique way. The brand new line of ACO SlotTop fully meets the requirements of timeless design. If you are an architect, ACO DRAIN® SlotTop can enable a discreet, sleek and original design.

| Load classes ¹⁾ | |
|--------------------------------------|---------------------|
| ■ C 250 | |
| ■ D 400 | |
| as per EN 1433 | |
| Net width (NW) | |
| 100, 150, 200 | |
| Material | |
| Stainless steel and galvanised steel | |
| Fields of application | |
| ■ Squares | ■ Pedestrian zones |
| ■ Prestige outdoor areas | ■ Boarding platform |



Maintenance

The integrated trap can be extracted, emptied out, cleaned and fitted back. Moreover, the gully is easy to flush out.

¹⁾ More information on load classes on page 22 and 23.

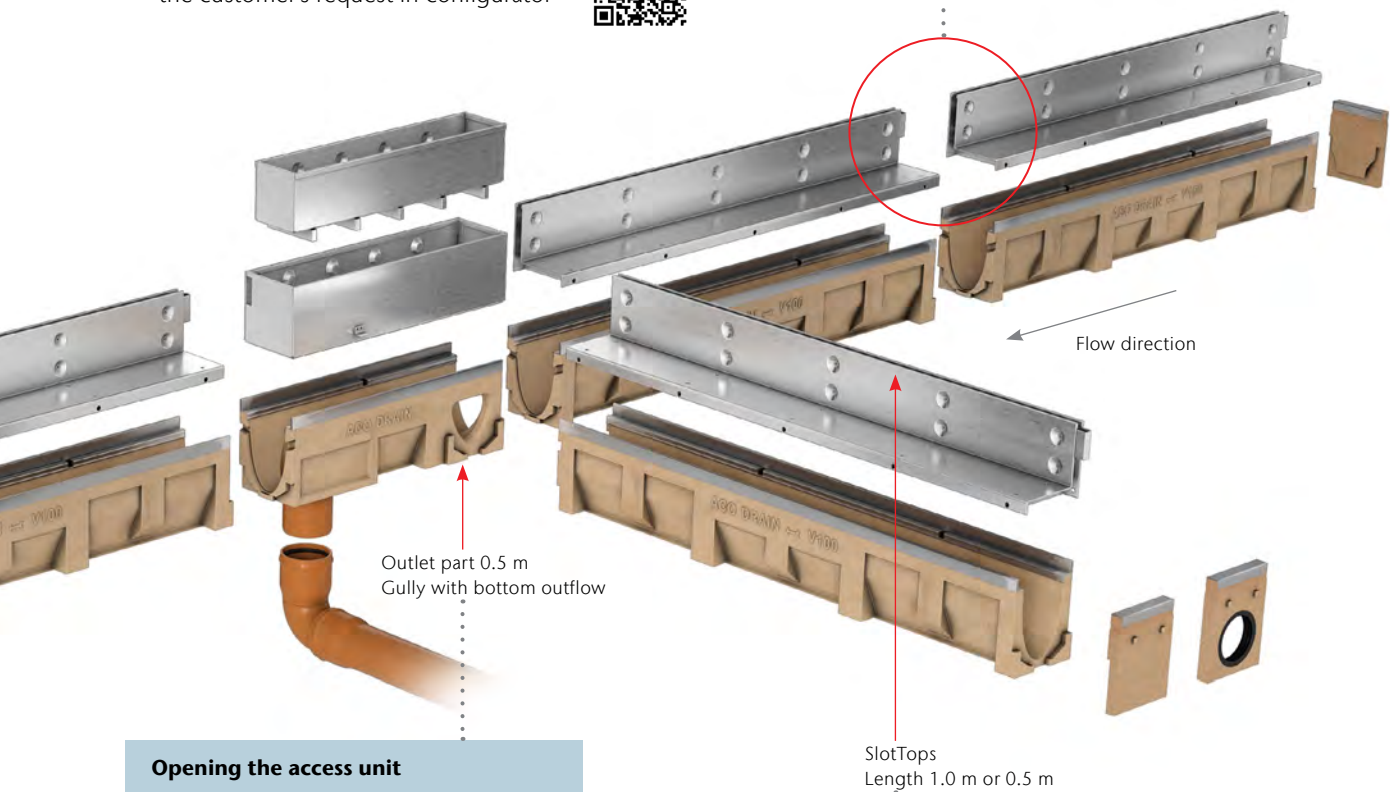
Advantages overview

- A unique product in minimalist design
- Suitable for a whole range of paving blocks made of various materials
- As standard 3 heights of SlotTop are offered: 65, 105 and 150 mm
- SlotTop are suitable for the following ACO DRAIN® drainage systems: Multiline, XtraDrain, MultiDrain and Civiline
- The grates are fitted with a protective cover, which reduces the risk of damage during installation
- System components include, among others, access units for easy maintenance and cleaning
- SlotTop is in full compliance with the EN 1433
- Inlet slot of 10 mm max width gives Heelguard™ protection
- More heights are available upon the customer's request in configurator



Easy installation

Thanks to the connector, the SlotTops are aligned and connected accurately, ensuring a fluid line and highly aesthetic design.



Opening the access unit

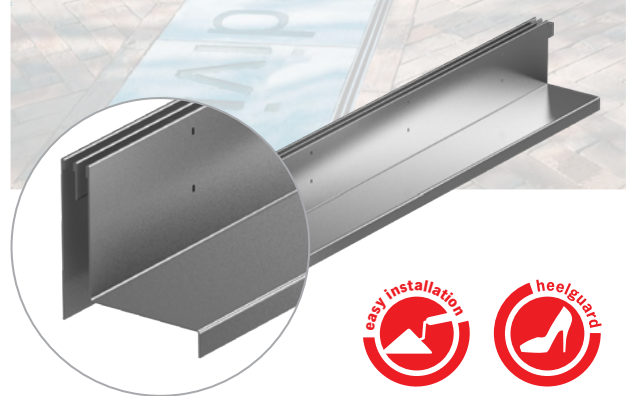
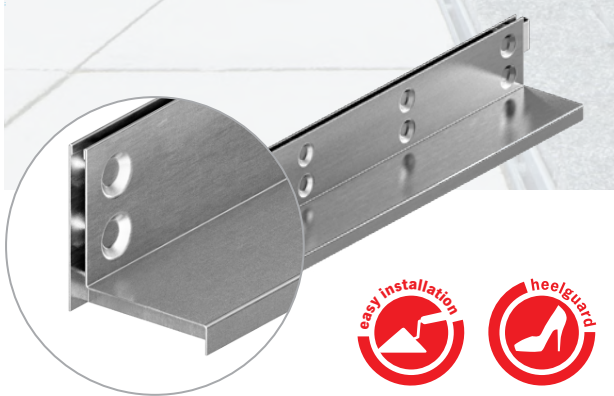
The access unit is easily accessible thanks to an inspection part – to be extracted by special hooks (order No. 445947) or keys (order No. 447850).



Edge protection

The cover protecting the inlet slot not only protects the SlotTop against damage during installation, but also shields the professional line drainage from dirt (order No. 446084).





SlotTop SINGLE
Galvanised
Stainless steel

SlotTop DOUBLE
Galvanised
Stainless steel

SlotTop

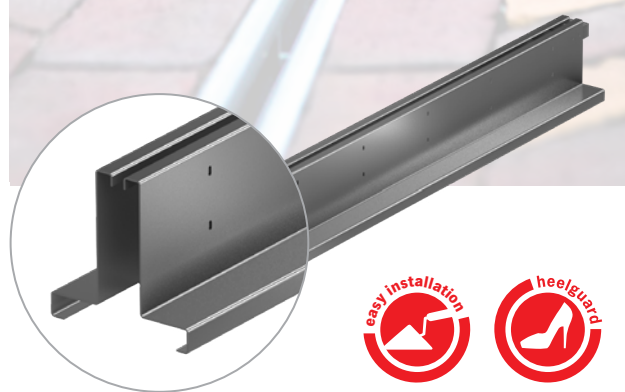
ACO DRAIN® professional line drainage



Multiline V 100 S
Edge: Galvanised steel

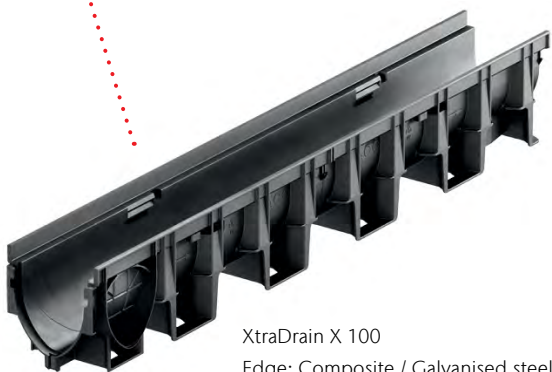
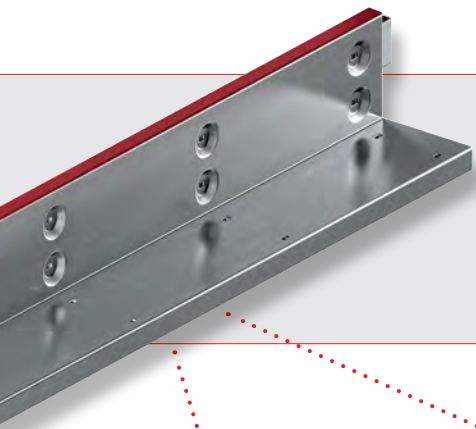


Multiline Seal In V 100
Edge: Galvanised steel / Stainless steel

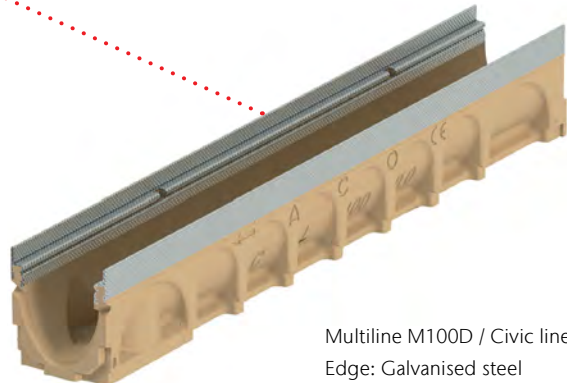


SlotTop TRIPLE
Galvanised
Stainless steel

SlotTop STRIP
Galvanised
Stainless steel



XtraDrain X 100
Edge: Composite / Galvanised steel



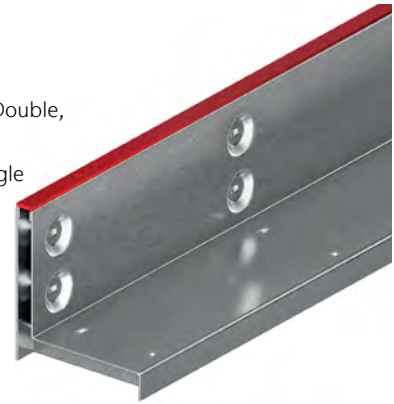
Multiline M100D / Civic line CL100
Edge: Galvanised steel

SlotTop: for NW 100 professional line drainage

ACO Product advantages

- A new generation of SlotTops
- SlotTops are placed into the gully / channel to ensure optimal outlet performance
- The guide connector ensures the parts are connected accurately
- Reinforced upper edge
- Construction heights of 65, 105 and 150 mm for various ways of installation
- **Supplied with cover strips protecting the inlet during installation**

- Drainage system fully certificated as per EN1433:2002
- Net width 100 mm
- Load class C250 - SlotTop Single, Double, Triple, Strip
- Load class D400 - only SlotTop Single
- Suitable for the following systems:
 - Multiline
 - XtraDrain
 - MultiDrain
 - Civicline




ACO SlotTop, Class C 250

- SlotTops with no welded joints
- 10 mm lateral slot for SlotTop Single and SlotTop Strip
- 2x8 mm lateral slot for SlotTop Double and 3x8 mm lateral slot for SlotTop Triple
- With guide strap
- Slotted frame corresponding fully to EN 1433:2002
- With strengthened top edge
- Slot heights: 65 mm, 105 mm and 150 mm
- **Delivery including cover strips as protection during construction period**




| Material | Dimensions | | | Size of the inlet opening [mm] | Inlet cross-section [cm ² /m] | Weight [kg] | PU [piece] | Item number |
|----------|------------|-------|-------------|-----------------------------------|---|----------------|---------------|-------------|
| | Length | Width | Slot Height | | | | | |
| | | | | | | | | |

SlotTop Single

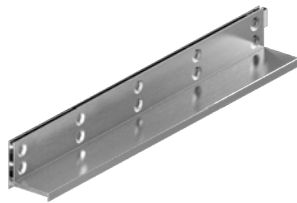
| | | | | | | | | | |
|---|------------------|------|-----|----|----|-----|-----|-----|--------|
|  | Galvanised steel | 1000 | 123 | 65 | 10 | 100 | 4,3 | 72 | 445926 |
| | | 500 | 123 | 65 | 10 | 100 | 2,3 | 100 | 445927 |
| | Stainless steel | 1000 | 123 | 65 | 10 | 100 | 4,2 | 72 | 445928 |
| | | 500 | 123 | 65 | 10 | 100 | 2,2 | 100 | 445929 |

SlotTop Single - access unit

| | | | | | | | | | |
|---|------------------|-----|-----|----|----|-----|-----|----|--------|
|  | Galvanised steel | 500 | 123 | 65 | 10 | 100 | 3,7 | 60 | 445931 |
| | Stainless steel | 500 | 123 | 65 | 10 | 100 | 3,8 | 60 | 445930 |

| Material | Dimensions | | | Size of the inlet opening | Inlet cross-section | Weight | PU | Item number |
|----------|------------|-------|-------------|---------------------------|----------------------|--------|---------|-------------|
| | Length | Width | Slot Height | | | | | |
| | [mm] | [mm] | [mm] | [mm] | [cm ² /m] | [kg] | [piece] | |

SlotTop Single



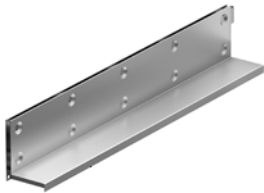
| | | | | | | | | |
|------------------------|------|-----|-----|----|-----|-----|-----|--------|
| Galvanised steel | 1000 | 123 | 105 | 10 | 100 | 5,3 | 72 | 445598 |
| | 500 | 123 | 105 | 10 | 100 | 2,8 | 100 | 445599 |
| Stainless steel 1.4301 | 1000 | 123 | 105 | 10 | 100 | 5,2 | 72 | 445600 |
| | 500 | 123 | 105 | 10 | 100 | 2,7 | 100 | 445601 |
| Stainless steel 1.4404 | 1000 | 123 | 105 | 10 | 100 | 5,2 | 72 | 446971 |
| | 500 | 123 | 105 | 10 | 100 | 2,7 | 100 | 446972 |

SlotTop Single - access unit



| | | | | | | | | |
|------------------------|-----|-----|-----|----|-----|-----|----|--------|
| Galvanised steel | 500 | 123 | 105 | 10 | 100 | 4,9 | 40 | 445603 |
| Stainless steel 1.4301 | 500 | 123 | 105 | 10 | 100 | 5 | 40 | 445602 |
| Stainless steel 1.4404 | 500 | 123 | 105 | 10 | 100 | 5 | 40 | 446973 |

SlotTop Single

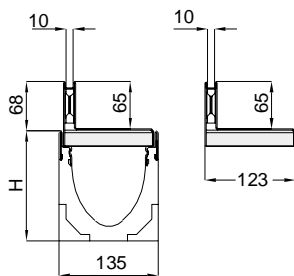


| | | | | | | | | |
|------------------|------|-----|-----|----|-----|-----|----|--------|
| Galvanised steel | 1000 | 123 | 150 | 10 | 100 | 6,4 | 48 | 445932 |
| | 500 | 123 | 150 | 10 | 100 | 3,3 | 96 | 445933 |
| Stainless steel | 1000 | 123 | 150 | 10 | 100 | 6,3 | 48 | 445934 |
| | 500 | 123 | 150 | 10 | 100 | 3,3 | 96 | 445935 |

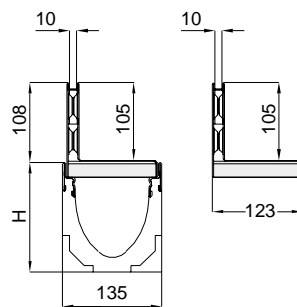
SlotTop Single - access unit



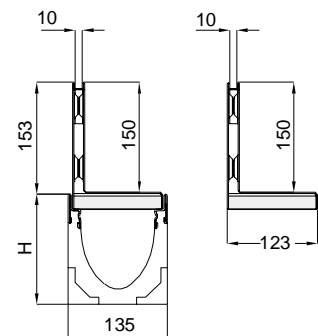
| | | | | | | | | |
|------------------|-----|-----|-----|----|-----|-----|----|--------|
| Galvanised steel | 500 | 123 | 150 | 10 | 100 | 6,2 | 40 | 445937 |
| Stainless steel | 500 | 123 | 150 | 10 | 100 | 6,3 | 40 | 445936 |









SlotTop **Single**
slot height 65 mm

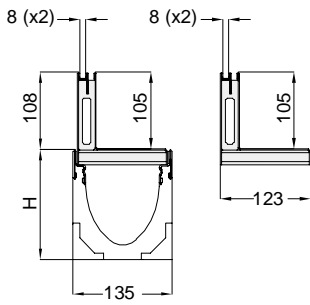


SlotTop **Single**
slot height 105 mm

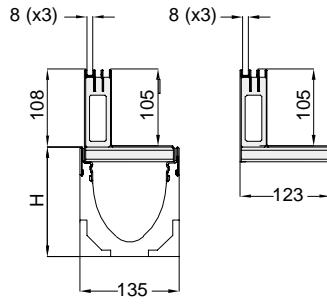


SlotTop **Single**
slot height 150 mm

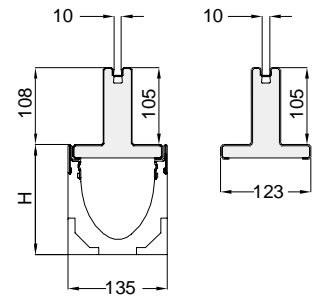
| | Material | Dimensions | | | Size of the inlet opening | Inlet cross-section | Weight | PU | Item number |
|---|------------------|------------|-------|-------------|---------------------------|---------------------|--------|----|-------------|
| | | Length | Width | Slot Height | [mm] | | | | |
| | | | | | | | | | |
| SlotTop Double | | | | | | | | | |
|  | Galvanised steel | 1000 | 123 | 105 | 2 x 8 | 160 | 5,9 | 40 | 447185 |
| | | 500 | 123 | 105 | 2 x 8 | 160 | 3,1 | 80 | 447186 |
| | Stainless steel | 1000 | 123 | 105 | 2 x 8 | 160 | 5,7 | 40 | 445938 |
| | | 500 | 123 | 105 | 2 x 8 | 160 | 3 | 80 | 445939 |
| SlotTop Double - access unit | | | | | | | | | |
|  | Galvanised steel | 500 | 123 | 105 | 2 x 8 | 160 | 5,2 | 10 | 447187 |
| | Stainless steel | 500 | 123 | 105 | 2 x 8 | 160 | 5,3 | 10 | 445940 |
| SlotTop Triple | | | | | | | | | |
|  | Galvanised steel | 1000 | 123 | 105 | 3 x 8 | 240 | 6,4 | 40 | 447768 |
| | | 500 | 123 | 105 | 3 x 8 | 240 | 3,3 | 10 | 447769 |
| | Stainless steel | 1000 | 123 | 105 | 3 x 8 | 240 | 6,2 | 40 | 445941 |
| | | 500 | 123 | 105 | 3 x 8 | 240 | 3,2 | 10 | 445942 |
| SlotTop Triple - access unit | | | | | | | | | |
|  | Galvanised steel | 500 | 123 | 105 | 3 x 8 | 240 | 5,4 | 10 | 447770 |
| | Stainless steel | 500 | 123 | 105 | 3 x 8 | 240 | 5,5 | 10 | 445943 |
| SlotTop Strip | | | | | | | | | |
|  | Stainless steel | 1000 | 123 | 105 | 10 | 100 | 5,7 | 48 | 445944 |
| | | 500 | 123 | 105 | 10 | 100 | 2,9 | 48 | 445945 |
| SlotTop Strip - access unit | | | | | | | | | |
|  | Stainless steel | 500 | 123 | 105 | 10 | 100 | 6,8 | 15 | 445946 |



SlotTop **Double**
 slot height 105 mm



SlotTop **Triple**
 slot height 105 mm



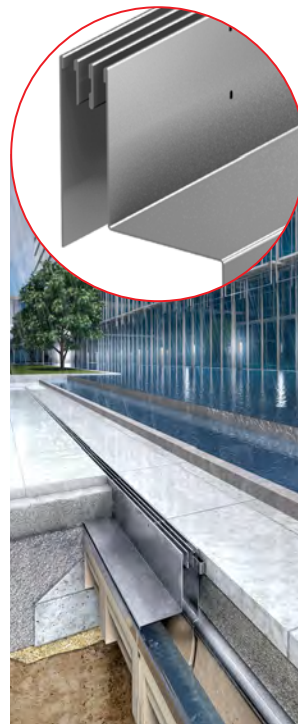
SlotTop **Strip**
 slot height 105 mm



SlotTop **SINGLE**



SlotTop **DOUBLE**



SlotTop **TRIPLE**



SlotTop **STRIP**

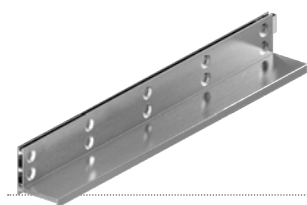
ACO SlotTop, Class D 400

- SlotTop welded solution
- With 10 mm lateral slot
- With guide strap
- Slotted frame corresponding fully to EN 1433:2002
- With strengthened top edge
- Slot height 105 mm and 150 mm
- Delivery including cover strips as protection during construction period



| Material | Dimensions | | | Size of the inlet opening [mm] | Inlet cross-section [cm ² /m] | Weight [kg] | PU [piece] | Item number |
|----------|---------------------|--------------------|---------------------|-----------------------------------|---|----------------|---------------|-------------|
| | Slot Length [mm] | Slot Width [mm] | Slot Height [mm] | | | | | |

SlotTop Single



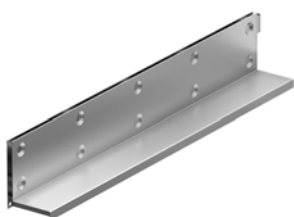
| | | | | | | | | |
|------------------|------|-----|-----|----|-----|-----|-----|--------|
| Galvanised steel | 1000 | 123 | 105 | 10 | 100 | 6,8 | 60 | 446015 |
| | 500 | 123 | 105 | 10 | 100 | 3,5 | 120 | 446016 |
| Stainless steel | 1000 | 123 | 105 | 10 | 100 | 6,7 | 60 | 446018 |
| | 500 | 123 | 105 | 10 | 100 | 3,4 | 120 | 446019 |

SlotTop Single - access unit



| | | | | | | | | |
|------------------|-----|-----|-----|----|-----|-----|----|--------|
| Galvanised steel | 500 | 123 | 105 | 10 | 100 | 6,5 | 50 | 446017 |
| Stainless steel | 500 | 123 | 105 | 10 | 100 | 6,6 | 50 | 446020 |

SlotTop Single



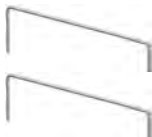




| | | | | | | | | |
|------------------|------|-----|-----|----|-----|-----|----|--------|
| Galvanised steel | 1000 | 123 | 150 | 10 | 100 | 8,4 | 48 | 446021 |
| | 500 | 123 | 150 | 10 | 100 | 4,3 | 96 | 446022 |
| Stainless steel | 1000 | 123 | 150 | 10 | 100 | 8,1 | 48 | 446024 |
| | 500 | 123 | 150 | 10 | 100 | 4,1 | 96 | 446025 |

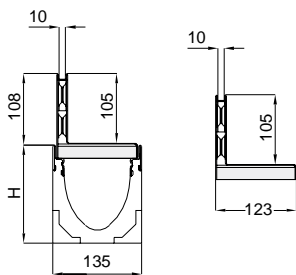
SlotTop Single - access unit



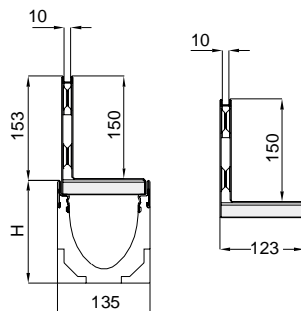
| | | | | | | | | |
|------------------|-----|-----|-----|----|-----|-----|----|--------|
| Galvanised steel | 500 | 123 | 150 | 10 | 100 | 8,1 | 40 | 446023 |
| Stainless steel | 500 | 123 | 150 | 10 | 100 | 8,2 | 40 | 446026 |

Accessories

| | Description | Suitable for | Weight | Packing | Item number |
|---|--|------------------------------|--------|---------|-------------|
| | | | [kg] | [piece] | |
|  | Lifting hook for SlotTop access unit ■ For lifting SlotTop access unit inner part ■ Galvanised steel ■ 2 pcs per package | ■ SlotTop access unit | 0,5 | 1 | 445947 |
|  | Lifting key for SlotTop access unit ■ For lifting SlotTops Single in LC D 400 and SlotTops Double and Triple in LC C250 ■ Galvanised steel ■ 2 pcs per package | ■ SlotTop access unit | 0,3 | 1 | 447850 |
|  | Protective covers for SlotTops ■ For covering inlets during installation ■ PVC ■ 10 pcs per package, ā 1 m | ■ SlotTop Single | 0,8 | 1 | 446084 |
|  | Single end cap ■ For covering side openings ■ Stainless steel ■ 2 pcs per package | ■ SlotTop Single 65 | 0,08 | 1 | 446431 |
| | | ■ SlotTop Single 105 | 0,1 | 1 | 446432 |
| | | ■ SlotTop Single 105, 1.4404 | 0,1 | 1 | 449198 |
| | | ■ SlotTop Single 150 | 0,2 | 1 | 446433 |
|  | End cap Double, Triple, Strip ■ For covering side openings ■ Stainless steel ■ 2 pcs per package | ■ SlotTop Double 105 | 0,1 | 1 | 447182 |
| | | ■ SlotTop Triple 105 | 0,1 | 1 | 447183 |
| | | ■ SlotTop Strip 150 | 0,1 | 1 | 447184 |



SlotTop **Single**
slot height 105 mm



SlotTop **Single**
slot height 150 mm



SlotTop **SINGLE**

SlotTop: for NW 150 professional line drainage

ACO Product advantages

- A new generation of SlotTops
- SlotTops are placed into the gully / channel to ensure optimal outlet performance
- The guide connector ensures the parts are connected accurately
- Reinforced upper edge
- Construction heights of 105 mm and 150 mm for various ways of installation
- **Supplied with cover strips protecting the inlet during installation**

- Drainage system fully certified as per EN 1433:2002
- Net width 150 mm
- Load class C250 - SlotTop Single, Double, Triple
- Load class D400 - only SlotTop Single
- Suitable for the following systems:
 - Multiline
 - XtraDrain
 - MultiDrain
 - Civicline



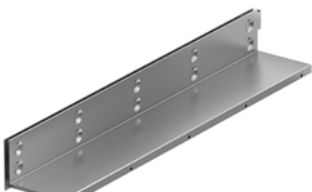
ACO SlotTop, Class C 250

- 10 mm lateral slot for SlotTop Single
- 2x8 mm lateral slot for SlotTop Double and 3x8 mm lateral slot for SlotTop Triple
- With guide strap
- Slotted frame corresponding fully to EN 1433:2002
- With strengthened top edge
- Slot height 105 mm
- **Delivery including cover strips as protection during construction period**

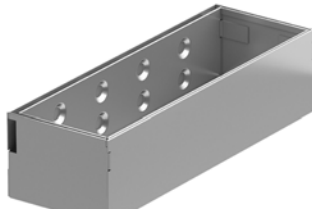


| Material | Dimensions | | | Size of the inlet opening [mm] | Inlet cross-section [cm ² /m] | Weight [kg] | PU [piece] | Item number |
|----------|------------|-------|-------------|-----------------------------------|---|----------------|---------------|-------------|
| | Length | Width | Slot Height | | | | | |
| | | | | | | | | |


SlotTop Single

| | | | | | | | | | |
|---|------------------|------|-----|-----|----|-----|-----|----|--------|
|  | Galvanised steel | 1000 | 173 | 105 | 10 | 100 | 6,2 | 40 | 446128 |
| | | 500 | 173 | 105 | 10 | 100 | 3,2 | 80 | 446129 |
| | Stainless steel | 1000 | 173 | 105 | 10 | 100 | 6,1 | 40 | 446131 |
| | | 500 | 173 | 105 | 10 | 100 | 3,2 | 80 | 446132 |


SlotTop Single - access unit

| | | | | | | | | | |
|---|------------------|-----|-----|-----|----|-----|-----|----|--------|
|  | Galvanised steel | 500 | 173 | 105 | 10 | 100 | 5,7 | 48 | 446130 |
| | Stainless steel | 500 | 173 | 105 | 10 | 100 | 5,9 | 48 | 446133 |


SlotTop Double

| | | | | | | | | | |
|---|------------------|------|-----|-----|-------|-----|-----|----|--------|
|  | Galvanised steel | 1000 | 173 | 105 | 2 x 8 | 160 | 6,8 | 40 | 448215 |
| | | 500 | 173 | 105 | 2 x 8 | 160 | 3,5 | 80 | 448216 |
| | Stainless steel | 1000 | 173 | 105 | 2 x 8 | 160 | 6,6 | 40 | 448218 |
| | | 500 | 173 | 105 | 2 x 8 | 160 | 3,4 | 80 | 448219 |


SlotTop Double - access unit

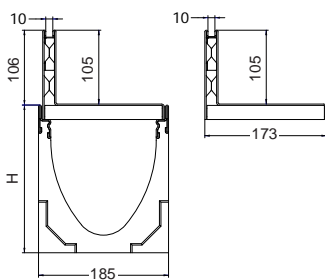
| | | | | | | | | | |
|---|------------------|-----|-----|-----|-------|-----|-----|----|--------|
|  | Galvanised steel | 500 | 173 | 105 | 2 x 8 | 160 | 6 | 48 | 448217 |
| | Stainless steel | 500 | 173 | 105 | 2 x 8 | 160 | 6,1 | 48 | 448220 |

SlotTop Triple

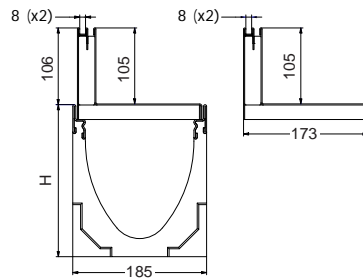
| | | | | | | | | | |
|---|------------------|------|-----|-----|-------|-----|-----|----|--------|
|  | Galvanised steel | 1000 | 173 | 105 | 3 x 8 | 240 | 7,3 | 40 | 448227 |
| | | 500 | 173 | 105 | 3 x 8 | 240 | 3,8 | 80 | 448228 |
| | Stainless steel | 1000 | 173 | 105 | 3 x 8 | 240 | 7 | 40 | 448230 |
| | | 500 | 173 | 105 | 3 x 8 | 240 | 3,7 | 80 | 448231 |

SlotTop Triple - access unit

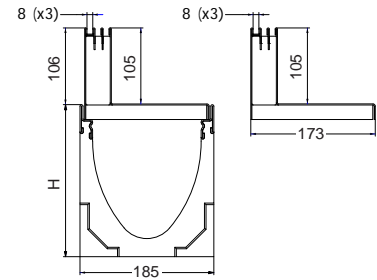
| | | | | | | | | | |
|--|------------------|-----|-----|-----|-------|-----|-----|----|--------|
|  | Galvanised steel | 500 | 173 | 105 | 3 x 8 | 240 | 6,2 | 48 | 448229 |
| | Stainless steel | 500 | 173 | 105 | 3 x 8 | 240 | 6,3 | 48 | 448232 |



SlotTop **Single**
slot height 105 mm



SlotTop **Double**
slot height 105 mm



SlotTop **Triple**
slot height 105 mm



SlotTop **SINGLE**



SlotTop **DOUBLE**



SlotTop **TRIPLE**

ACO SlotTop, Class D 400

- SlotTop welded solution
- With 10 mm lateral slot
- With guide strap
- Slotted frame corresponding fully to EN 1433:2002
- With strengthened top edge
- Slot height 105, 150 mm
- **Delivery including cover strips as protection during construction period**



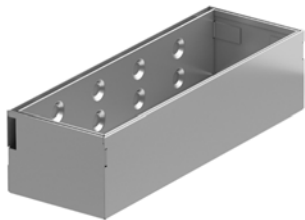
| Material | Dimensions | | | Size of the inlet opening | Inlet cross-section | Weight | PU | Item number |
|----------|------------|-------|-------------|---------------------------|----------------------|--------|---------|-------------|
| | Length | Width | Slot Height | [mm] | | | | |
| | [mm] | [mm] | [mm] | [mm] | [cm ² /m] | [kg] | [piece] | |

SlotTop Single



| | | | | | | | | |
|------------------|------|-----|-----|----|-----|-----|----|--------|
| Galvanised steel | 1000 | 173 | 105 | 10 | 100 | 8,4 | 40 | 446027 |
| | 500 | 173 | 105 | 10 | 100 | 4,5 | 80 | 446028 |
| Stainless steel | 1000 | 173 | 105 | 10 | 100 | 8,1 | 40 | 446030 |
| | 500 | 173 | 105 | 10 | 100 | 4,3 | 80 | 446031 |

SlotTop Single - access unit



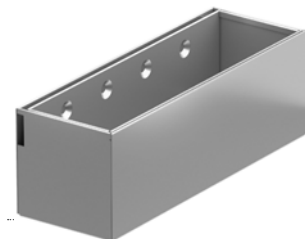
| | | | | | | | | |
|------------------|-----|-----|-----|----|-----|-----|----|--------|
| Galvanised steel | 500 | 173 | 105 | 10 | 100 | 7,7 | 48 | 446029 |
| Stainless steel | 500 | 173 | 105 | 10 | 100 | 7,8 | 48 | 446032 |

SlotTop Single

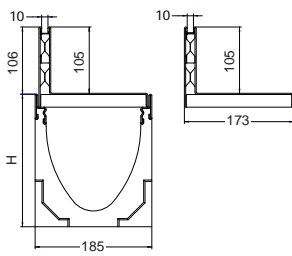


| | | | | | | | | |
|------------------|------|-----|-----|----|-----|-----|----|--------|
| Galvanised steel | 1000 | 173 | 150 | 10 | 100 | 9,8 | 32 | 446033 |
| | 500 | 173 | 150 | 10 | 100 | 5,2 | 64 | 446034 |
| Stainless steel | 1000 | 173 | 150 | 10 | 100 | 9,5 | 32 | 446036 |
| | 500 | 173 | 150 | 10 | 100 | 5 | 64 | 446037 |

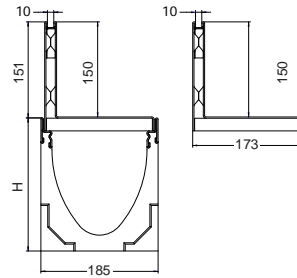
SlotTop Single - access unit



| | | | | | | | | |
|------------------|-----|-----|-----|----|-----|-----|----|--------|
| Galvanised steel | 500 | 173 | 150 | 10 | 100 | 9,5 | 32 | 446035 |
| Stainless steel | 500 | 173 | 150 | 10 | 100 | 9,6 | 32 | 446038 |



SlotTop **Single**
slot height 105 mm

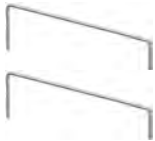






SlotTop **Single**
slot height 150 mm



SlotTop **SINGLE**

Accessories

| | Description | Suitable for | Weight | Packing | Item number |
|---|---|---|--------|---------|-------------|
| | | | [kg] | [piece] | |
|  | Lifting hook for SlotTop access unit <ul style="list-style-type: none"> For lifting SlotTop access unit inner part Galvanised steel 2 pcs per package | <ul style="list-style-type: none"> SlotTop access unit | 0,5 | 1 | 445947 |
|  | Lifting key for SlotTop access unit <ul style="list-style-type: none"> For lifting SlotTops Single in LC D 400 and SlotTops Double and Triple in LC C250 Galvanised steel 2 pcs per package | <ul style="list-style-type: none"> SlotTop access unit | 0,3 | 1 | 447850 |
|  | Protective covers for SlotTops <ul style="list-style-type: none"> For covering inlets during installation PVC 10 pcs per package, ā 1 m | <ul style="list-style-type: none"> SlotTop Single | 0,8 | 1 | 446084 |
|  | Single end cap <ul style="list-style-type: none"> For covering side openings Stainless steel 2 pcs per package | <ul style="list-style-type: none"> SlotTop Single 105 | 0,1 | 1 | 446432 |
| | | <ul style="list-style-type: none"> SlotTop Single 150 | 0,2 | 1 | 446433 |
|  | End cap Double, Triple, Strip <ul style="list-style-type: none"> For covering side openings Stainless steel 2 pcs per package | <ul style="list-style-type: none"> SlotTop Double 105 | 0,1 | 1 | 447182 |
| | | <ul style="list-style-type: none"> SlotTop Triple 105 | 0,1 | 1 | 447183 |

SlotTop: for NW 200 professional line drainage

ACO Product advantages

- A new generation of SlotTops
- SlotTops are placed into the gully / channel to ensure optimal outlet performance
- The guide connector ensures the parts are connected accurately
- Reinforced upper edge
- Construction heights of 105 and 150 mm for various ways of installation
- **Supplied with cover strips protecting the inlet during installation**

- Drainage system fully certified as per EN 1433:2002
- Net width 200 mm
- Load class C250 - SlotTop Single, Double, Triple
- Load class D400 - only SlotTop Single
- Suitable for the following systems:
 - Multiline
 - XtraDrain
 - MultiDrain
 - Civicline



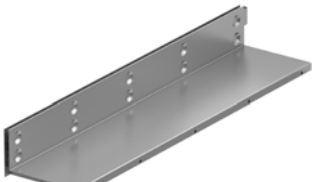
ACO SlotTop, Class C 250

- 10 mm lateral slot for SlotTop Single
- 2x8 mm lateral slot for SlotTop Double and 3x8 mm lateral slot for SlotTop Triple
- With guide strap
- Slotted frame corresponding fully to EN 1433:2002
- With strengthened top edge
- Slot height 105 mm
- **Delivery including cover strips as protection during construction period**




| Material | Dimensions | | | Size of the inlet opening [mm] | Inlet cross-section [cm ² /m] | Weight [kg] | PU [piece] | Item number |
|----------|---------------------|---------------|----------------|-----------------------------------|---|----------------|---------------|-------------|
| | Slot Length [mm] | Width [mm] | Height [mm] | | | | | |


SlotTop Single

| | | | | | | | | | |
|---|------------------|------|-----|-----|----|-----|-----|----|--------|
|  | Galvanised steel | 1000 | 223 | 105 | 10 | 100 | 7,5 | 36 | 446134 |
| | | 500 | 223 | 105 | 10 | 100 | 3,9 | 72 | 446135 |
| | Stainless steel | 1000 | 223 | 105 | 10 | 100 | 7,4 | 36 | 446137 |
| | | 500 | 223 | 105 | 10 | 100 | 3,9 | 72 | 446138 |


SlotTop Single - access unit

| | | | | | | | | | |
|---|------------------|-----|-----|-----|----|-----|-----|----|--------|
|  | Galvanised steel | 500 | 223 | 105 | 10 | 100 | 6,5 | 36 | 446136 |
| | Stainless steel | 500 | 223 | 105 | 10 | 100 | 6,7 | 36 | 446139 |


SlotTop Double

| | | | | | | | | | |
|---|------------------|------|-----|-----|-------|-----|-----|----|--------|
|  | Galvanised steel | 1000 | 223 | 105 | 2 x 8 | 160 | 8,3 | 36 | 448221 |
| | | 500 | 223 | 105 | 2 x 8 | 160 | 4,3 | 72 | 448222 |
| | Stainless steel | 1000 | 223 | 105 | 2 x 8 | 160 | 8 | 36 | 448224 |
| | | 500 | 223 | 105 | 2 x 8 | 160 | 4,2 | 72 | 448225 |


SlotTop Double - access unit

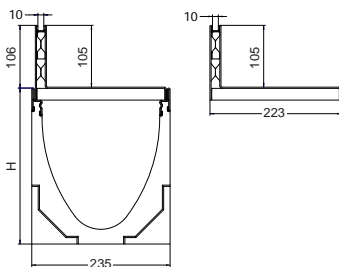
| | | | | | | | | | |
|---|------------------|-----|-----|-----|-------|-----|-----|----|--------|
|  | Galvanised steel | 500 | 223 | 105 | 2 x 8 | 160 | 6,8 | 36 | 448223 |
| | Stainless steel | 500 | 223 | 105 | 2 x 8 | 160 | 6,9 | 36 | 448226 |

SlotTop Triple

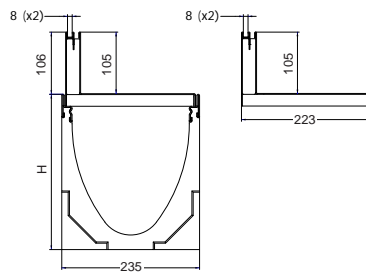
| | | | | | | | | | |
|---|------------------|------|-----|-----|-------|-----|-----|----|--------|
|  | Galvanised steel | 1000 | 223 | 105 | 3 x 8 | 240 | 8,8 | 36 | 448233 |
| | | 500 | 223 | 105 | 3 x 8 | 240 | 4,6 | 72 | 448234 |
| | Stainless steel | 1000 | 223 | 105 | 3 x 8 | 240 | 8,5 | 36 | 448236 |
| | | 500 | 223 | 105 | 3 x 8 | 240 | 4,4 | 72 | 448237 |

SlotTop Triple - access unit

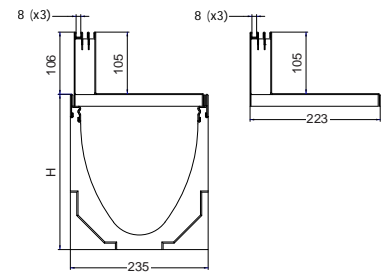
| | | | | | | | | | |
|--|------------------|-----|-----|-----|-------|-----|-----|----|--------|
|  | Galvanised steel | 500 | 223 | 105 | 3 x 8 | 240 | 7 | 36 | 448235 |
| | Stainless steel | 500 | 223 | 105 | 3 x 8 | 240 | 7,1 | 36 | 448238 |



SlotTop **Single**
slot height 105 mm



SlotTop **Double**
slot height 105 mm



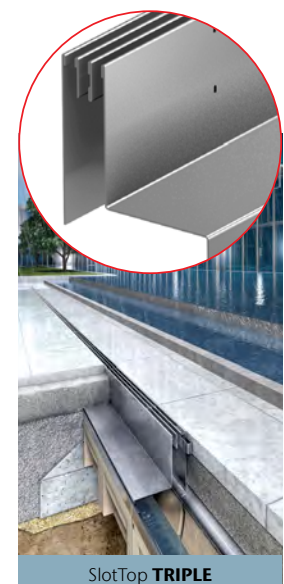
SlotTop **Triple**
slot height 105 mm



SlotTop **SINGLE**



SlotTop **DOUBLE**



SlotTop **TRIPLE**

ACO SlotTop, Class D 400

- With 10 mm lateral slot
- With guide strap
- Slotted frame corresponding to fully to EN 1433:2002
- With strengthened top edge
- Slot height 105, 150 mm
- Delivery including cover strips as protection during construction period



| Material | Dimensions | | | Size of the inlet opening [mm] | Inlet cross-section [cm ² /m] | Weight [kg] | PU [piece] | Item number |
|----------|----------------|---------------|---------------------|-----------------------------------|---|----------------|---------------|-------------|
| | Length [mm] | Width [mm] | Slot Height [mm] | | | | | |

SlotTop Single



| | | | | | | | | |
|------------------|------|-----|-----|----|-----|------|----|--------|
| Galvanised steel | 1000 | 223 | 105 | 10 | 100 | 10,5 | 36 | 446039 |
| | 500 | 223 | 105 | 10 | 100 | 5,6 | 72 | 446040 |
| Stainless steel | 1000 | 223 | 105 | 10 | 100 | 10,1 | 36 | 446042 |
| | 500 | 223 | 105 | 10 | 100 | 5,4 | 72 | 446043 |

SlotTop Single - access unit



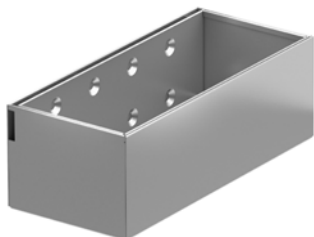
| | | | | | | | | |
|------------------|-----|-----|-----|----|-----|-----|----|--------|
| Galvanised steel | 500 | 223 | 105 | 10 | 100 | 8,9 | 36 | 446041 |
| Stainless steel | 500 | 223 | 105 | 10 | 100 | 9,0 | 36 | 446044 |

SlotTop Single

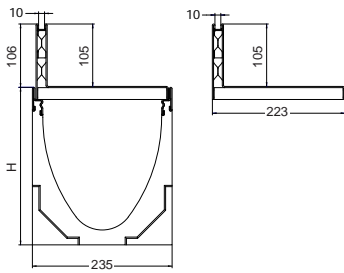


| | | | | | | | | |
|------------------|------|-----|-----|----|-----|------|----|--------|
| Galvanised steel | 1000 | 223 | 150 | 10 | 100 | 12,0 | 24 | 446045 |
| | 500 | 223 | 150 | 10 | 100 | 6,4 | 48 | 446046 |
| Stainless steel | 1000 | 223 | 150 | 10 | 100 | 11,5 | 24 | 446048 |
| | 500 | 223 | 150 | 10 | 100 | 6,1 | 48 | 446049 |

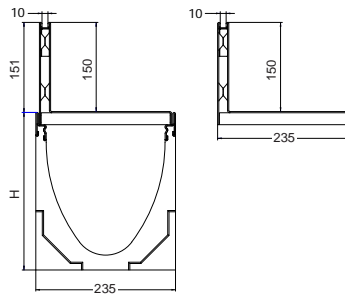
SlotTop Single - access unit



| | | | | | | | | |
|------------------|-----|-----|-----|----|-----|------|----|--------|
| Galvanised steel | 500 | 223 | 150 | 10 | 100 | 10,9 | 24 | 446047 |
| Stainless steel | 500 | 223 | 150 | 10 | 100 | 11,0 | 24 | 446050 |



SlotTop **Single**
slot height 105 mm

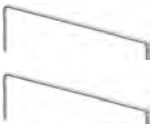






SlotTop **Single**
slot height 150 mm



SlotTop **SINGLE**

Accessories

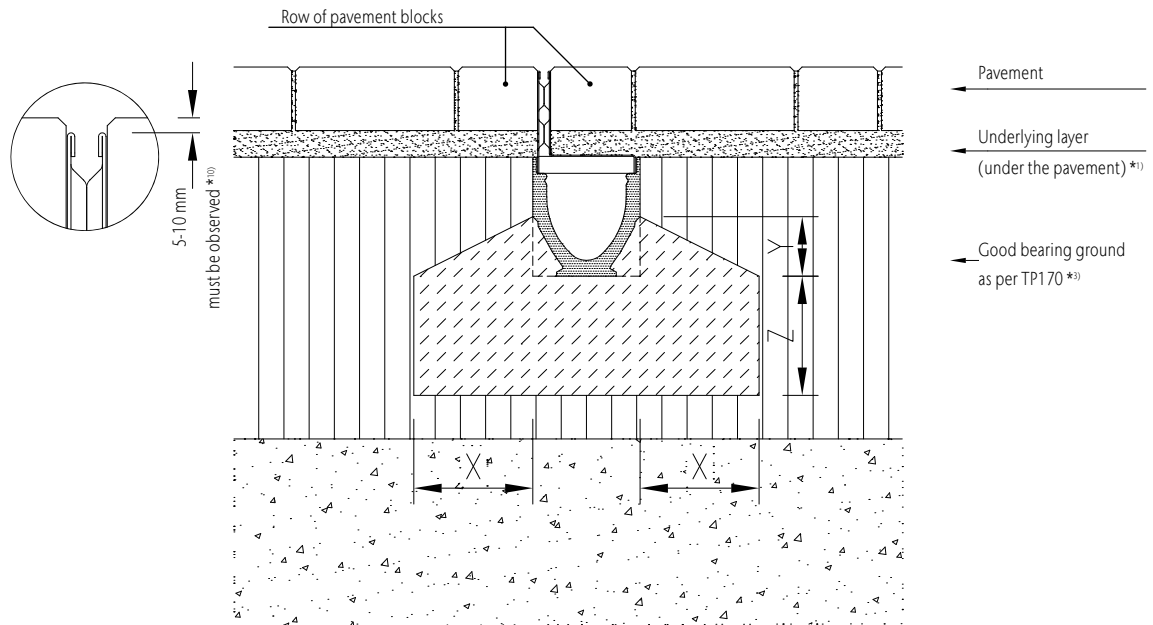
| | Description | Suitable for | Weight [kg] | Packing [piece] | Item number |
|---|---|---|----------------|--------------------|-------------|
|  | Lifting hook for SlotTop access unit <ul style="list-style-type: none"> For lifting SlotTop access unit inner part Galvanised steel 2 pcs per package | <ul style="list-style-type: none"> SlotTop access unit | 0,5 | 1 | 445947 |
|  | Lifting key for SlotTop access unit <ul style="list-style-type: none"> For lifting SlotTops Single in LC D 400 and SlotTops Double and Triple in LC C250 Galvanised steel 2 pcs per package | <ul style="list-style-type: none"> SlotTop access unit | 0,3 | 1 | 447850 |
|  | Protective covers for SlotTops <ul style="list-style-type: none"> For covering inlets during installation PVC 10 pcs per package, \bar{a} 1 m | <ul style="list-style-type: none"> SlotTop Single | 0,8 | 1 | 446084 |
|  | Single end cap <ul style="list-style-type: none"> For covering side openings Stainless steel 2 pcs per package | <ul style="list-style-type: none"> SlotTop Single 105 | 0,1 | 1 | 446432 |
| | | <ul style="list-style-type: none"> SlotTop Single 150 | 0,2 | 1 | 446433 |
|  | End cap Double, Triple <ul style="list-style-type: none"> For covering side openings Stainless steel 2 pcs per package | <ul style="list-style-type: none"> SlotTop Double 105 | 0,1 | 1 | 447182 |
| | | <ul style="list-style-type: none"> SlotTop Triple 105 | 0,1 | 1 | 447183 |

Installation details: Overview

The Y construction measurement is stated in the relevant ACO installation details and determines the minimal amount of concrete needed to stabilize the sides of the drainage channel. The figure might differ depending on the drainage channel height and on the thickness of the top layer.



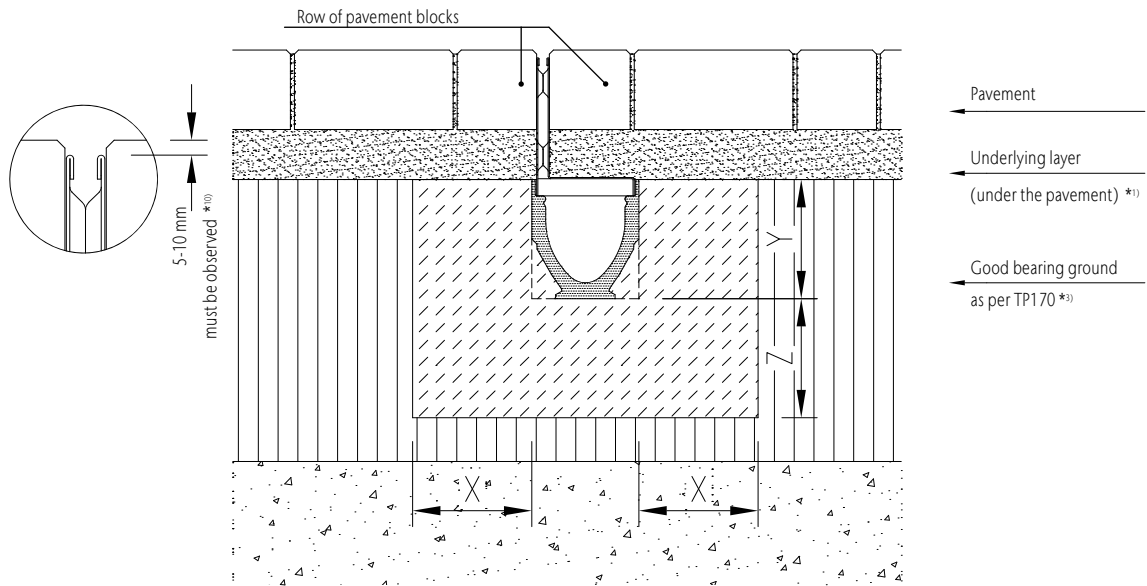
Placing the product in pavement: A 15 to C 250



| Load class | (as per EN 1433) | A 15 | B 125 | C 250 | D 400 | E 600 |
|---------------------------------|----------------------|-------------|--------------|--------------|--------------|--------------|
| Minimal concrete quality | (as per EN 206-1) | ≥ C 12/15 | ≥ C 12/15 | ≥ C 20/25 | | |
| Degree of environment influence | (as per EN 206-1 Z3) | (X0) | (X0) | (X0) | | |
| Basic measurements | X (cm) | ≥ 10 | ≥ 10 | ≥ 15 | | |
| | Y (cm) | ≥ 10 | ≥ 10 | ≥ 15 | | |
| | Z (cm) | ≥ 10 | ≥ 10 | ≥ 15 | | |

Installation manual at <https://www.swm.aco/>

Placing the product in pavement: D 400

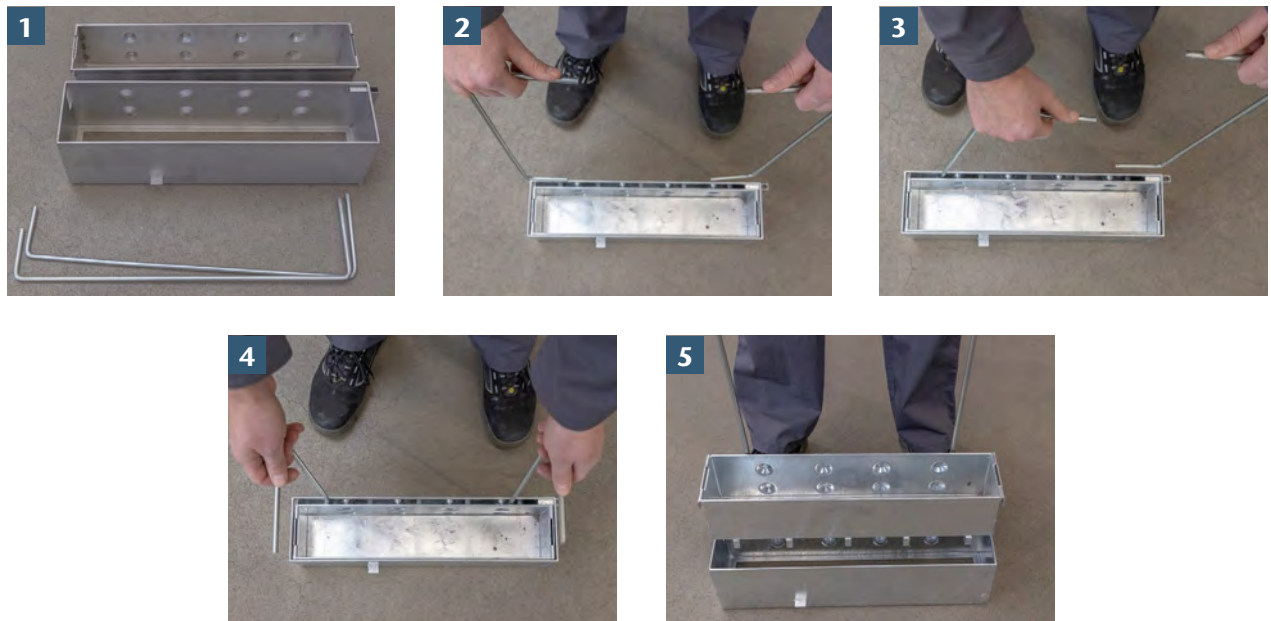


| Load class | (as per EN 1433) | A 15 | B 125 | C 250 | D 400 | E 600 |
|---------------------------------|----------------------|------|-------|-------|-------------------------|-------|
| Minimal concrete quality | (as per EN 206-1) | | | | ≥ C 20/25 | |
| Degree of environment influence | (as per EN 206-1 Z3) | | | | (X0) | |
| Basic measurements | X (cm) | | | | ≥ 20 | |
| | Y (cm) | | | | Drainage channel height | |
| | Z (cm) | | | | ≥ 20 | |

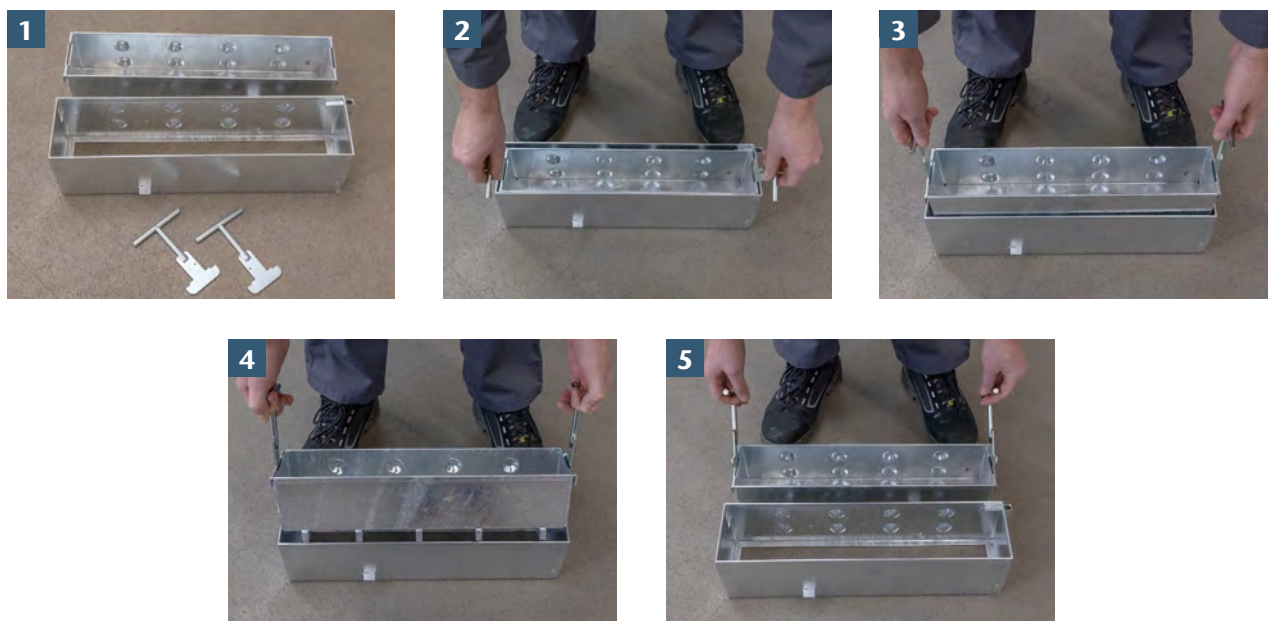
Installation manual at <https://www.swm.aco/>

Maintenance:

SlotTop access unit maintenance using lifting hooks



SlotTop access unit maintenance using lifting keys*



* For SlotTops Single in LC D 400 and SlotTops Double and Triple in LC C250

Every ACO product supports
the ACO system chain



ACO Industries k.s.

Havlíčková 260
582 22 Příbyslav
Czech Republic

ACO. we care for water

