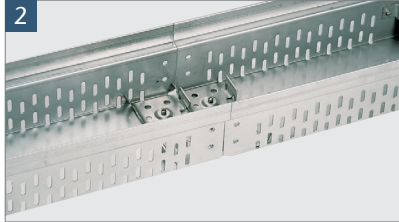
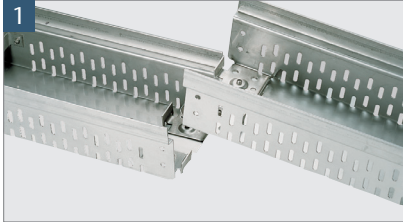


ACO Profiline height-adjustable

Assembly:

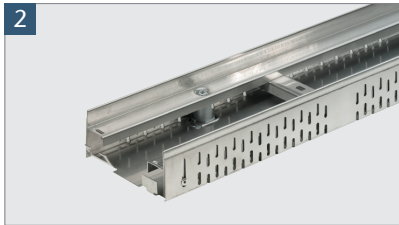
1. Connection of the channel elements



Picture 1: The plug system for connecting the channels is designed so that a channel body lies flat and the following channel body is attached from top to bottom.

Picture 2: A firm connection is created between the channel bodies without screws or tools. The continuously closed channel bottom and the protective layer provided by the customer ensure that the sensitive roof cladding underneath is not damaged.

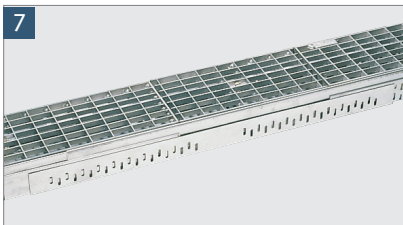
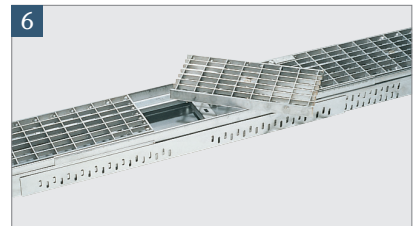
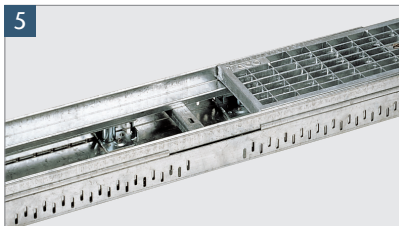
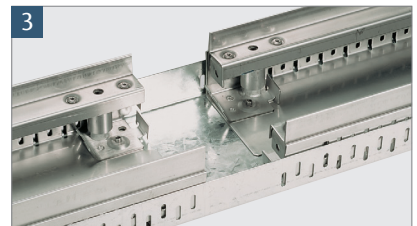
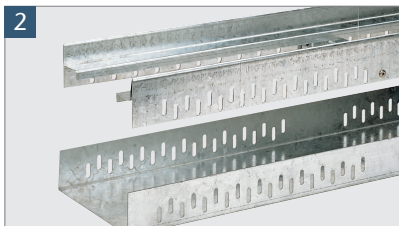
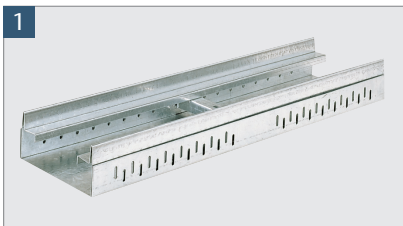
2. Attachment of the end caps



Picture 1: The end cap adapts to the respective building height.

Picture 2: The end cap is inserted into the recesses at the channel end with the pronounced tabs.

3. Assembly of the centre compensation element



Picture 1: The centre compensation element also allows free length adjustment of 5 to 50 cm between at least two channel elements.

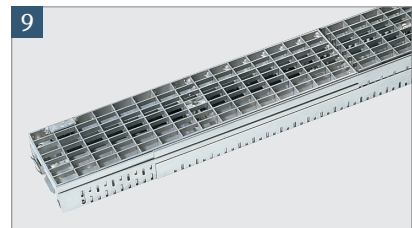
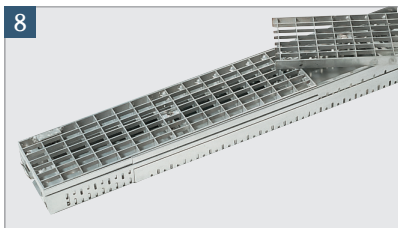
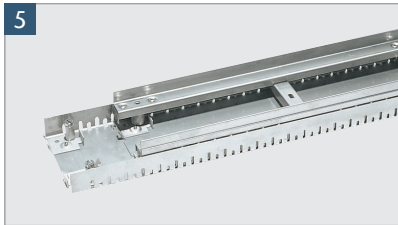
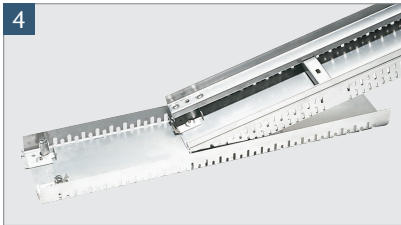
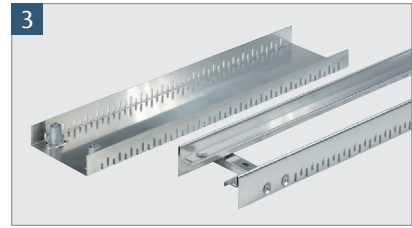
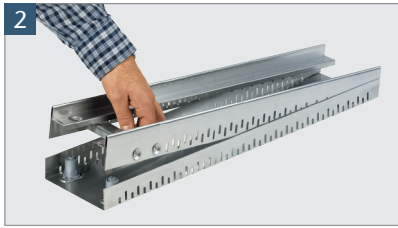
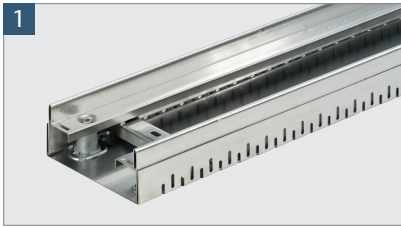
Picture 2: When installing the compensation element, the floor and frame are completely separated.

Picture 3: Place the two channel elements in the bottom of the compensation element and create the desired compensation length.

Picture 4: The frame of the compensation element is placed over the frame of the channel element.

Picture 5– 7: The cover grating is adjusted in length and can also be locked in the compensation element.

4. Assembly of the end compensation element



Picture 1: The compensation element end allows a continuous adjustment of the overall length from 10 to 55 cm behind or in front of a channel element.

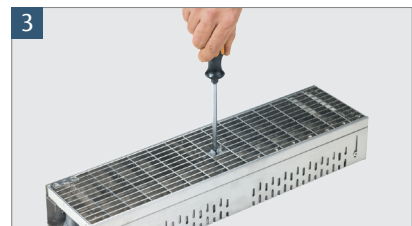
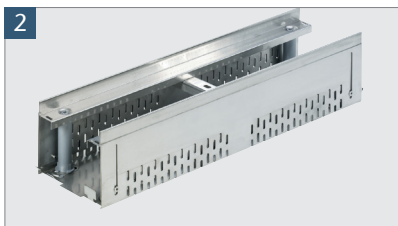
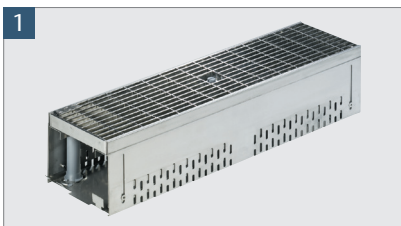
Picture 2–3: When installing the compensation element, the floor and frame are completely separated from each other.

Picture 4–5: Place the channel element in the bottom of the compensation element and create the desired compensation length.

Picture 6–7: The frame of the compensation element is placed over the channel element.

Picture 8–9: The cover grating is adjusted in length and can also be locked in the compensation element.

5. The height adjustment

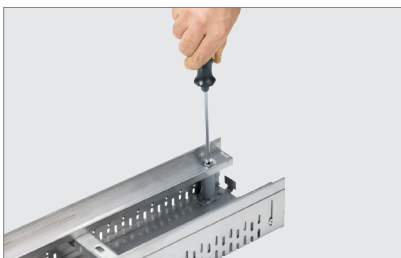


Picture 1–2: The height adjustment is located below the cover grating at both ends of

the channel and can be easily reached at any time by moving the grating.

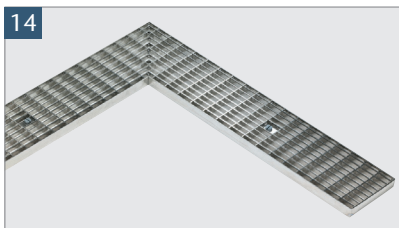
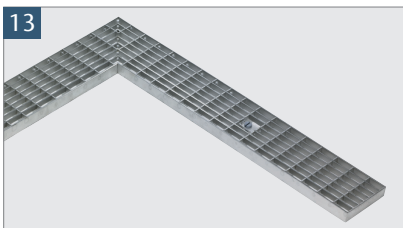
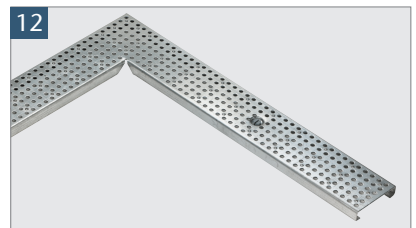
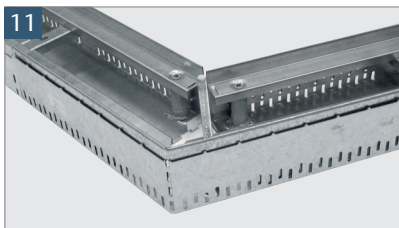
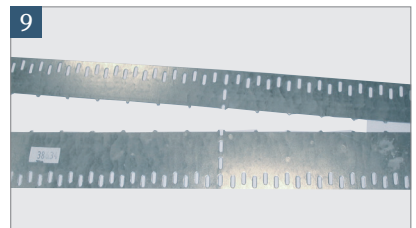
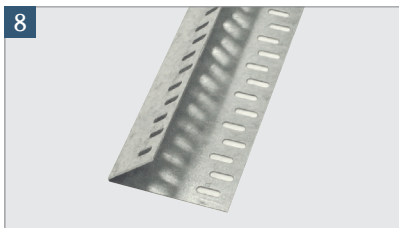
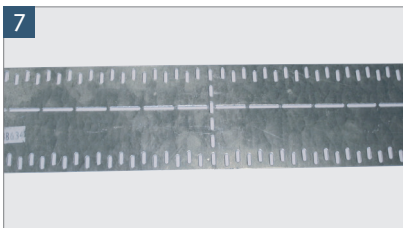
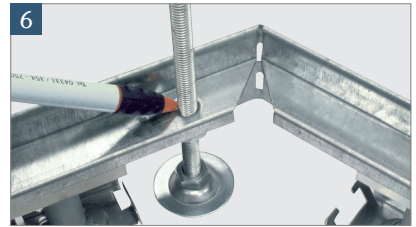
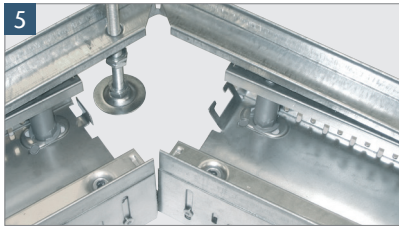
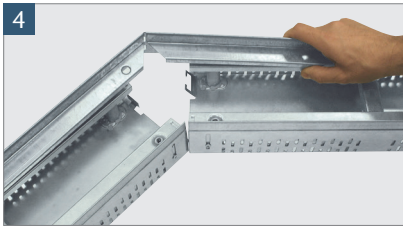
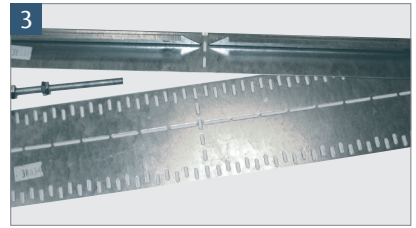
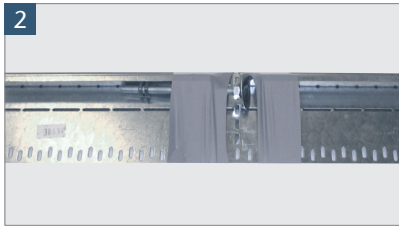
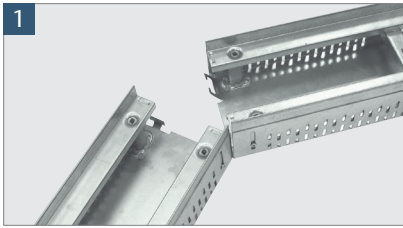
Picture 3: The overall height can be continuously adjusted using a slotted screwdriver or a 5 mm Allen key.

6. The grating stop



The grating lock is simply activated by turning it a quarter turn to the right or left using a slit screwdriver.

7. Corner creation with variable corner element 0-90° (does not fit on the compensation element)



Picture 1: The channel elements are placed together at the desired angle.

Picture 2–3: The adhesive tape on the packaging can be removed without leaving any residue.

Picture 4: The variable corner element is adapted to the angle and placed over the frame of the channel element.

Picture 5–6: The threaded rod is fixed with the nuts under the corner element and shortened to the required height.

Picture 7–8: Separation of the gravel bar by bending over the perforation.

Picture 9: The gravel strip (suitable for all heights) is adjusted to the height of the channel element.

Picture 10–11: The gravel strip is brought to the required angle and loosely placed against the channel elements

Picture 12–14: The gratings are mitre-cut on site at the desired angle.

ACO Hochbau Vertrieb GmbH

Neuwirtshäuser Straße 14, 97723 Oberthulba/Reith
Tel. 09736 41-60, Fax 09736 41-52
hochbau@aco.com
www.aco-hochbau.de

ACO. creating
the future of drainage

